

# KANSAS JUDICIAL COUNCIL BULLETIN

---

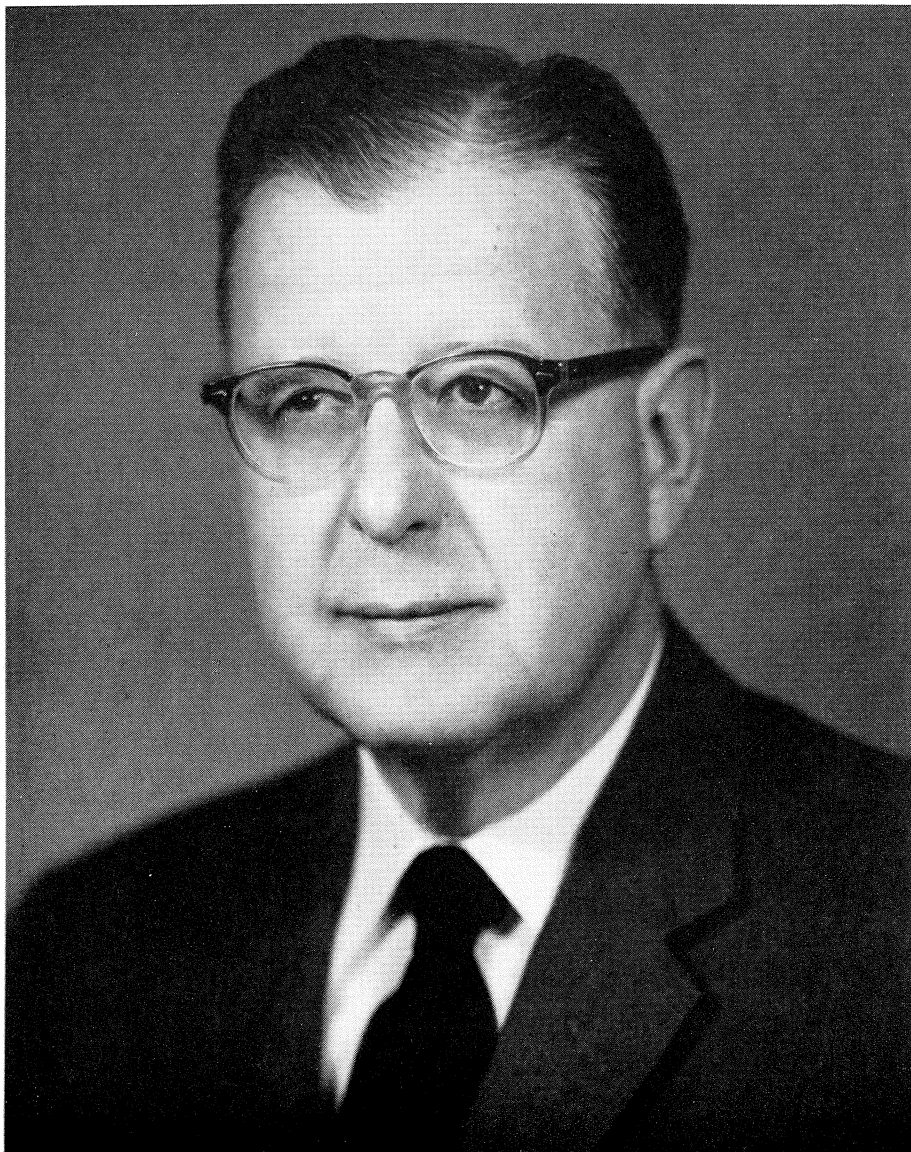
---

OCTOBER, 1956

PART 3—THIRTIETH ANNUAL REPORT

---

---



J. WILLARD HAYNES  
President,  
The Bar Association of the State of Kansas

## TABLE OF CONTENTS

---

	PAGE
FOREWORD .....	92
THE LAWYER AND BAR ASSOCIATIONS .....	93
By J. Willard Haynes, President of the Bar Association of the State of Kansas	
SUMMARY OF THE WORK OF THE SUPREME COURT .....	98
SUPREME COURT—Twenty-nine-year Summary .....	100
TABLE A-1, Roster of Judicial Officials as of July 1, 1956 .....	103
TABLE A-2, Summary of District Courts, by Districts—Year Ending June 30, 1956 .....	105
TABLE A-3 and A-4 (combined), Disposition of Civil Cases, Including Divorce—Year Ending June 30, 1956 .....	108
TABLE A-5, District Courts, Types of Civil Cases Commenced .....	112
TABLE B-1 (condensed), Disposition of Criminal Cases .....	113
TABLE B-3, Nature of Crime—State as a Whole .....	115
TABLE C-1, Probate Courts, Summary of Business Handled .....	116
TABLE C-2, Estates of Decedents—Year Ending June 30, 1956 .....	120
TABLE C-3, Guardianships and Trusts—Year Ending June 30, 1956 .....	124
TABLE D-1 (combined with B-2), Disposition of Cases in County and City Courts .....	128
PLEASE HELP US KEEP OUR MAILING LIST UP TO DATE .....	130
MEMBERS OF JUDICIAL COUNCIL .....	<i>(Inside back cover)</i>
FORMER MEMBERS OF JUDICIAL COUNCIL .....	<i>(Inside back cover)</i>

## FOREWORD

---

Following our customary practice, we have asked the Honorable J. Willard Haynes, president of the Bar Association of the State of Kansas, whose photograph is shown on the cover, to prepare an article on a subject of his own choosing for publication in this issue of the BULLETIN.

Mr. Haynes was born in Kansas City, Kan., on June 13, 1903, and attended the public schools of that city. He attended Junior College in Kansas City, Mo., for one year, and also spent one year at the University of Kansas. Following this he attended and was graduated from the Kansas City School of Law in 1927, and was admitted to the Kansas bar that year. He has practiced law in Kansas City, Kan., continuously since that time. In 1950 he was admitted to the bar of the Supreme Court of the United States. Mr. Haynes has been a member of the Kansas Judicial Council since 1951. He and his wife, Marie, are the parents of two sons and reside at 1904 Washington Avenue, Kansas City, Kan., and his law office is at 328 Brotherhood Building of that city. He was president of the Wyandotte County Bar Association in 1941, and has been a member of the Executive Council of the Bar Association of the State of Kansas since 1945. He is a member of numerous professional and fraternal organizations and is active in civic affairs in Kansas City, Kan. We know that his article will be of interest to our readers.

---

This issue of the BULLETIN also contains summarized tables showing the volume of work in the Supreme Court, the district courts, probate courts, county courts and city courts of the state for the year ending June 30, 1956. The Judicial Council requests your study of the statistical information shown in the tables and invites suggestions as to any improvements that could be made in the form and content of the information collected.

## The Lawyer and Bar Associations

By J. WILLARD HAYNES, *President, 1956-57*

The Bar Association of the State of Kansas

The practice of law is an honorable calling followed by some since before Biblical times. Webster defines the word "lawyer" as being, "One versed in the laws, or a practitioner of law; one whose profession is to conduct lawsuits for clients or to advise as to the prosecution or defense of lawsuits, or as to legal rights and obligations in other matters. It is a general term, comprehending attorneys, counselors, solicitors, barristers, sergeants, advocates, etc." Now, that definition is not new to any lawyer because the very fact that he is a lawyer means that he knows what the word "lawyer" means, but in this day it now means something a little more. It means that the highest court in the State of Kansas has conferred upon that individual the right and privilege to exercise the prerogatives of a lawyer in the State of Kansas, and that conferment came to him because, through application and study, he had gained the knowledge sufficient to qualify him as a lawyer according to the standards set up by our Supreme Court through its examining body, the Board of Law Examiners of the State of Kansas. Now that that individual has attained the goal that he sought, first as a lawyer and, in some instances, as a judge, he has a problem and that problem, whether he be lawyer or judge, is how to be effective. Consciously or unconsciously the question he asks himself is, "How shall I make my strength count for most in this world of effort?" and that is the question which everyone of us ought to ask himself, but not for the purpose of mere selfish gain, not to get money for the sake of money or fame for the sake of fame, but for the sake of usefulness in the world; for the sake of helpfulness for those we love and of all humanity. Selfishness poisons all it touches and makes all achievement dead-sea fruit which turns to ashes on the lips. So the great question, "How shall I make the most of myself?" which every worker in the world is asking must be nobly asked and therefore unselfishly asked if you would have it wisely answered. There are two words that solve this query of your destiny, and those two words are "work" and "habits."

When Horace Greeley was dying, he exclaimed, "Fame is a vapor, popularity an accident, riches take wings, those who cheer today will curse tomorrow, only one thing endures—character!" These weighty words bid all remember that life's one task is the making of manhood; our world is a college, events are teachers, happiness is the graduating point, character is the diploma God gives man.

These things only lead me further to say that because this right and privilege has been conferred upon us to exercise the prerogatives of a lawyer in the State of Kansas simply means that daily we will be charged with the responsibility of advising and conducting the business and affairs of our fellow-man who has put his trust in us as our client; that, therefore, we cannot accept the relationship to our client that we acquired by virtue of being a lawyer without some serious thought as to the grave responsibility that the employment entails.



Perhaps the unspoken desire of all of us is best expressed by James J. Metcalfe in his "Lawyer's Prayer"—

I ask You, God, to help my cause . . . Whatever it may be . . .  
 For prosecution or defense . . . For wealth or poverty . . . In  
 criminal or civil suit . . . However great or small . . . As long  
 as I am honest when . . . I wear my legal shawl . . . I want to  
 save the innocent . . . And try to do my share . . . To see that  
 each defendant will . . . Receive a trial fair . . . I do not ask for  
 riches or . . . The glory of a star . . . But just to do my duty as  
 . . . A member of the bar . . . To study and prepare each case  
 . . . And quietly excel . . . In praise of my profession and . . .  
 To serve my client well.

One of our duties as a lawyer is to see that justice is done our client. In one of his addresses, Arthur M. Hyde said, "Justice is not social, economic or political, it is all of them. Justice is justice, plain and unqualified. It cannot be qualified. If limited to a class, it is no longer justice. Every citizen, not merely a class, is entitled to justice." The late Knute Rockne, the famous football coach at Notre Dame, once said, "Some of you may say this will to win is a bad thing. In what way is it a bad thing? Education is supposed to prepare a young man for life. Life is competition. Success in life goes only to the man who competes successfully. A successful lawyer is the one who goes out and wins—wins lawsuits. There is no reward for the loser. There is nothing wrong with the will to win. The only penalty should be that the man who wins unfairly should be set down."

There probably was a time, in days gone by, when every lawyer went his separate way as did, at different times in history, every doctor, every dentist, every osteopath, every chiropractor and every skilled and unskilled artisan and craftsman. But, gradually it dawned upon these individuals who practiced their professions and worked at their trades, that they could better themselves and their profession or trade by unifying their efforts for their common good. To the lawyers came bar associations, to the doctors—medical associations, to the dentists—dental associations, to the artisans and craftsmen—unions and they all who participated found that in union there was strength, that in uniting they could secure the knowledge of each other and work toward the betterment of their respective professions or trades.

The Bar Association of the State of Kansas had its beginning in about the year 1874 when a few Kansas lawyers met in the Supreme Court room in Topeka, and from that humble beginning it has emerged until today it is a voluntary association composed of almost 1,700 members out of some 2,200 practicing lawyers in the state of Kansas. The business and affairs of the Bar Association of the State of Kansas are conducted by an Executive Council which consists of nine councilmen, one from each of nine districts into which the state of Kansas has been divided. In addition to these nine councilmen, the Executive Council consists of the president of the organization, the president-elect, vice-president, secretary-treasurer and executive secretary. Each councilman is elected for a term of two years. The officers are elected for one-year terms. The association, in its history, has experienced all of the trials and tribulations of a professional organization. Less than ten years ago, it was financially distressed and funds were solicited to pump new life into it. The solicitation was an outstanding success and from that time on its financial suc-

cess has been assured. Today, the association offers its members the benefits of the Journal of the Bar Association of the State of Kansas which is published quarterly, and articles printed therein are frequently cited in our Supreme Court opinions, and it is rated as highly as any journal of its kind in the United States. Members of the association are afforded the advantages of the monthly bar letter and the standards for title opinions which has just recently been revised and will be reissued to the members in the revised form without additional cost. There is now a program in the formative stage to annotate those standards and when that is done those annotations will be furnished the members to be placed in the cover which contains the standards. Just recently, in fact at the beginning of this year, the Supreme Court Opinions Digest was started and within a very few days after the opinions are handed down by our Supreme Court, a one-paragraph capsule form digest of what is contained in the opinion is sent to each member so that they have knowledge of the points involved in the decision handed down by our Supreme Court some few days after the decision is rendered without the heretofore attendant delay of about a month until the Advance Sheets were issued. If, in looking at the Digest, a member finds something of interest to him that he can use in some case that is presently of some concern to him, he has but to write to the office of the State Bar Association in Topeka and for a cost of 25 cents a page he will receive a copy of the opinion. A member has the advantage of the public relations program, the work of all of the various committees, the pamphlets which are distributed without cost to him and the institutes and sections which as time goes on are gaining in interest and popularity. All of this by just becoming a member. The only expense is the small amount a member pays as dues which, income tax-wise, is deductible. So it is hoped every practicing lawyer in Kansas will come to the realization that there is some truth in the saying that "in unity there is strength."

What has been said with regard to the benefits of a state organization for lawyers carries on into the national organization. It was but a year or so ago that the American Bar Association had a membership of approximately 55,000 lawyers and at the conclusion of this year's membership campaign that membership has been increased to over 82,000. Now that seems incredible. When a doctor of medicine takes the witness stand, one of the first things a lawyer asks him is what professional organizations does he belong to and then the doctor starts in and names a long list of them, but always, whether he is a doctor in a big city or a doctor at the crossroads, he takes pride in saying that he is a member of the American Medical Association and so every lawyer should take pride in saying that he is a member of the American Bar Association, because on a national level his interests, as a lawyer, in his profession are being advanced and protected every day by the national organization of his profession. The offices of the American Bar Association are housed in one of the finest buildings of its kind, The American Bar Center, located on the campus of the University of Chicago. There, in concrete, stone and marble, has been erected a monument to our profession that will endure down through the ages. Here all of the activities of the national organization are centered, the publication of the American Bar Journal and all of the other periodicals published through the efforts of the national organization is done here. Here is the nerve center for the organization that has for its purpose the betterment of our pro-

fession on a national basis. In addition to its many other fields of endeavor, the American Bar Association conducts an active and effective public relations program through the mediums of pamphlets, newspapers, radio, television and motion pictures, some phases of which each of you have some knowledge and are well aware of its help to you as individual practitioners. Its annual and regional meetings provide times and places when and where members may refresh their knowledge and gain new knowledge on timely legal subjects and along with it gain a few days relaxation away from the pressures of everyday practice.

The 1957 annual meeting of the American Bar Association will convene in July, 1957, in New York City and adjourn for a further meeting in London, England. Who among us wouldn't look forward to a trip such as that with keen anticipation? There in England, where the foundation of our law—the English Common Law—came into being, the American lawyer will have an opportunity to acquaint himself with the places we read of in our law student days, attend meetings of interest in the historic buildings used down through the ages by our English brothers, and see other parts of the world, the expense being deductible income tax-wise. Sounds interesting, doesn't it?

Now, back to each of us as an individual and as a lawyer. Above all else, I believe we each strive to acquire reputation—and, mind you, reputation is what others say of us. Canon 32 of the Canons of Professional Ethics, which I quote:

“Above all, a lawyer will find his highest honor in a deserved reputation for fidelity to private trust and public duty, as an honest man and a patriotic and loyal citizen.”

in a single sentence epitomizes the ideals of our great profession—honor . . . fidelity . . . trust . . . duty . . . loyalty. A principal objective of the American Bar Association is to maintain “high standards of legal education and professional conduct” and one of the keystones of its public relations program is the responsibility of every lawyer to so conduct himself as to help build public respect for the law and confidence in its practitioners.

That, too, was the central theme of the invocation delivered several years ago before a regional meeting of the American Bar Association by the Rev. Hanford L. King, Jr., the rector of St. James Episcopal Church in Bozeman, Mont., whose words of prayer were so eloquent and meaningful—so timely and timeless in their application—so expressive of the moral tone to which the profession aspires, that their message is hereinafter quoted in full—

“Eternal God whose laws of righteousness and truth control the destiny of men and nations, we pray for those who are called to determine and apply the laws of the land; that they may conform to Thy righteousness and promote Thy truth. Thou has committed to them the sacred privilege of establishing order, and securing equity; hold before them the high ideal of their vocation, that they may do justly and love mercy and walk humbly with their God. They are threatened by the assaults of self-interest and ambition; they are solicited by mercenary aims; they are tempted to call evil good and good evil; to defeat justice by adroitness, and obstruct truth by strategy, until in courts and legislative halls the ancient prophecy may be heard again: Judgment is turned back, and justice standeth afar off.

“Deliver Thy servants from these perils of their profession, that truth may stand boldly in the street, and equity enter fearlessly into the court room. Give prudence in counsel, courage in advocacy, and wisdom in decision.

Rebuke by the chastisement of the people's condemnation the prostitution of the law by prejudice or partisanship or politics, and assure each practitioner that integrity is more precious than shrewdness, and principle to be preferred to profit. From futile and artful controversies, from the commercial estimate of distinction and success, and from the degradation of a profession into a trade or a game, good Lord, deliver all judges, advocates and counselors; that they may deserve the leadership which is put into their hands and fulfill Thy holy purpose to judge the world with righteousness and the peoples with equity. We ask this in the name of Thy Son, Jesus Christ our Lord. Amen."

### Summary of the Work of the Supreme Court

The following is a summary of the work of the Supreme Court for the year ended June 30, 1956, and the cases pending July 1, 1956.

There were 318 appealed civil cases disposed of within the year ended June 30, 1956. Of these, 120 were dismissed without having been presented on the merits and 198 were submitted on the merits. Of these cases 130 were affirmed, 25 were reversed, 1 was reversed in part and modified in part, 7 were affirmed in part and reversed in part, 3 were affirmed in part and modified in part, 10 were dismissed, 3 were reversed in part and remanded in part, 1 was modified, 17 were reversed with direction, and 1 was reversed and dismissed.

The court disposed of 31 appealed criminal cases. Of this number 8 were dismissed without having been presented on the merits and 23 were submitted on the merits. Of these cases 18 were affirmed, 2 were reversed, 1 was dismissed, 1 was reversed in part and remanded in part, and 1 was remanded.

The court also disposed of 29 original cases. Of this number 8 were dismissed without having been presented on the merits, and 21 cases were submitted on their merits and written opinions filed, resulting in judgment for the plaintiff in 5 cases, judgment for the defendant in 4 cases, and with 12 writs denied.

This makes a total of 378 cases disposed of by the Supreme Court, of which 136 were dismissed without having been presented on the merits and 242 decided on the merits.

The cases pending July 1, 1956, are as follows: 238 appealed civil cases, 19 appealed criminal cases, and 15 original cases, making a total of 272 cases pending.

Of the 242 cases submitted to the Supreme Court on the merits, in 4 cases the opinions were filed before the regular opinion day, in 201 cases on the first regular opinion day, in 20 cases on the second regular opinion day, in 5 cases on the fourth regular opinion day, in 5 cases on the fifth regular opinion day, in 1 case on the sixth regular opinion day, in 1 case on the ninth regular opinion day. Five cases were denied on the day they were filed.

The regular opinion day is ordinarily a month after the case is submitted, more accurately it is the Saturday of the week hearings are had the next month after the case is submitted.

In 198 appealed civil cases in which opinions were filed within the year ended June 30, 1956, the time between the date when notice of appeal was filed in this court and the date the case was submitted on its merits is as follows: within three months, 2 cases; in 3 to 4 months, 6 cases; in 4 to 5 months, 4 cases; in 5 to 6 months, 11 cases; in 6 to 7 months, 20 cases; in 7 to 8 months, 33 cases; in 8 to 9 months, 67 cases; in 9 to 12 months, 47 cases; over 12 months, 8 cases.

In the 23 appealed criminal cases in which opinions were filed within the year ended June 30, 1956, the time between the date when notice of appeal was filed in this court and the date the case was submitted on its merits is as follows: in 3 to 4 month, 1 case; in 5 to 6 months, 2 cases; in 6 to 7 months, 3 cases; in 8 to 9 months, 7 cases; in 9 to 12 months, 6 cases; over 12 months, 4 cases.

There were pending in the Supreme Court July 1, 1956, a total of 272 cases as compared to 242 on the same date in 1955, 197 on the same date in 1954, 192 on the same date in 1953, 223 on the same date in 1952, 99 on the same date in 1951, 189 on the same date in 1950, 166 on the same date in 1949, 208 cases in 1948, 167 cases in 1947, 119 cases in 1946, 123 cases in 1945, 99 cases in 1944, 109 cases in 1943, 175 cases in 1942, 144 cases in 1941, 192 cases in 1940, 249 cases in 1939, 244 cases in 1938, 210 cases in 1937, 268 cases in 1936, 291 cases in 1935, 366 cases in 1934, 333 cases in 1933, 357 cases in 1932, 393 cases in 1931, 397 cases in 1930, 376 cases in 1929, 341 cases in 1928.

In the 29 years the clerk of the Supreme Court has furnished us detailed information of the work of the court, it has disposed of 12,524 cases, of which 3,978 were dismissed before submission, and 8,546 were submitted on the merits and written opinions filed.

## Supreme Court—Twenty-nine-year Summary

YEAR ENDED JUNE 30	Cases	Disposed of	Dismissed	Submitted
1928 . . . . .	Appealed, civil . . . . .	529	143	386
	Appealed, criminal . . . . .	101	44	57
	Original . . . . .	46	13	33
	Totals . . . . .	676	200	476
1929 . . . . .	Appealed, civil . . . . .	475	128	347
	Appealed, criminal . . . . .	72	29	43
	Original . . . . .	36	18	18
	Totals . . . . .	583	175	408
1930 . . . . .	Appealed, civil . . . . .	504	143	351
	Appealed, criminal . . . . .	77	37	40
	Original . . . . .	52	16	36
	Totals . . . . .	633	196	437
1931 . . . . .	Appealed, civil . . . . .	490	131	359
	Appealed, criminal . . . . .	63	29	34
	Original . . . . .	38	13	25
	Totals . . . . .	591	173	418
1932 . . . . .	Appealed, civil . . . . .	522	159	363
	Appealed, criminal . . . . .	74	45	29
	Original . . . . .	32	6	26
	Totals . . . . .	628	210	418
1933 . . . . .	Appealed, civil . . . . .	459	135	324
	Appealed, criminal . . . . .	66	35	31
	Original . . . . .	23	5	18
	Totals . . . . .	548	175	373
1934 . . . . .	Appealed, civil . . . . .	427	149	278
	Appealed, criminal . . . . .	52	30	22
	Original . . . . .	42	11	31
	Totals . . . . .	521	190	331
1935 . . . . .	Appealed, civil . . . . .	506	167	339
	Appealed, criminal . . . . .	58	26	32
	Original . . . . .	25	11	14
	Totals . . . . .	589	204	385
1936 . . . . .	Appealed, civil . . . . .	475	156	319
	Appealed, criminal . . . . .	66	31	35
	Original . . . . .	39	19	20
	Totals . . . . .	580	206	374
1937 . . . . .	Appealed, civil . . . . .	397	103	294
	Appealed, criminal . . . . .	56	27	29
	Original . . . . .	33	9	24
	Totals . . . . .	486	139	347
1938 . . . . .	Appealed, civil . . . . .	388	131	257
	Appealed, criminal . . . . .	41	25	16
	Original . . . . .	32	6	26
	Totals . . . . .	461	162	299
1939 . . . . .	Appealed, civil . . . . .	397	114	283
	Appealed, criminal . . . . .	32	17	15
	Original . . . . .	15	4	11
	Totals . . . . .	444	135	309
1940 . . . . .	Appealed, civil . . . . .	426	117	309
	Appealed, criminal . . . . .	31	10	21
	Original . . . . .	39	20	19
	Totals . . . . .	496	147	349

SUPREME COURT SUMMARY—CONTINUED

YEAR ENDED JUNE 30	Cases	Disposed of	Dismissed	Submitted
1941.....	Appealed, civil.....	314	103	211
	Appealed, criminal.....	31	14	17
	Original.....	64	39	25
	Totals.....	409	156	253
1942.....	Appealed, civil.....	293	82	211
	Appealed, criminal.....	23	4	19
	Original.....	27	6	21
	Totals.....	343	92	251
1943.....	Appealed, civil.....	290	72	218
	Appealed, criminal.....	28	14	14
	Original.....	35	17	18
	Totals.....	353	103	250
1944.....	Appealed, civil.....	216	59	157
	Appealed, criminal.....	17	7	10
	Original.....	16	5	11
	Totals.....	249	71	178
1945.....	Appealed, civil.....	186	51	135
	Appealed, criminal.....	9	8	1
	Original.....	15	6	9
	Totals.....	210	65	145
1946.....	Appealed, civil.....	178	44	134
	Appealed, criminal.....	19	6	13
	Original.....	43	15	28
	Totals.....	240	65	175
1947.....	Appealed, civil.....	189	55	134
	Appealed, criminal.....	13	4	9
	Original.....	59	19	40
	Totals.....	261	78	183
1948.....	Appealed, civil.....	244	63	181
	Appealed, criminal.....	23	8	15
	Original.....	93	73	20
	Totals.....	360	144	216
1949.....	Appealed, civil.....	284	54	230
	Appealed, criminal.....	22	8	14
	Original.....	96	31	65
	Totals.....	402	93	309
1950.....	Appealed, civil.....	304	91	213
	Appealed, criminal.....	17	4	13
	Original.....	19	8	11
	Totals.....	340	103	237
1951.....	Appealed, civil.....	327	83	244
	Appealed, criminal.....	22	8	14
	Original.....	26	18	8
	Totals.....	375	109	266
1952.....	Appealed, civil.....	244	57	187
	Appealed, criminal.....	42	17	25
	Original.....	10	3	7
	Totals.....	296	77	219
1953.....	Appealed, civil.....	291	96	195
	Appealed, criminal.....	43	13	30
	Original.....	33	11	22
	Totals.....	367	120	247



## JUDICIAL COUNCIL BULLETIN

## SUPREME COURT SUMMARY—CONCLUDED

YEAR ENDED JUNE 30	Cases	Disposed of	Dismissed	Submitted
1954.....	Appealed, civil.....	280	91	189
	Appealed, criminal.....	48	26	22
	Original.....	32	12	20
	Totals.....	360	129	231
1955.....	Appealed, civil.....	306	114	192
	Appealed, criminal.....	19	6	13
	Original.....	20	5	15
	Totals.....	345	125	220
1956.....	Appealed, civil.....	318	120	198
	Appealed, criminal.....	31	8	23
	Original.....	29	8	21
	Totals.....	378	136	242
	Grand totals....	12,524	3,978	8,546

TABLE A-1.—ROSTER OF JUDICIAL OFFICIALS AS OF JULY 1, 1956

COUNTY	Jud. dist.	District judge	Clerk of court	Probate judge
Allen.....	37	Spencer A. Gard.....	Mrs. Ina F. West.....	Howard T. Upshaw*
Anderson.....	4	Floyd H. Coffman.....	Mrs. Nell R. Graves...	Deane L. Smith*
Atchison.....	2	Edmund L. Page.....	Hal Waisner.....	Frank Hunn
Barber.....	24	Clark A. Wallace.....	Edith Myers.....	John C. Hilkey*
Barton.....	20	Roy J. McMullen.....	Geneva Steincamp.....	Leonard Bremer*
Bourbon.....	6	Harry W. Fisher.....	Amy Armstrong.....	Francis Thomas
Brown.....	22	A. O. Delaney.....	Edna Boicourt.....	Richard W. Shaw*
Butler..... Div. 1	13	George Reynolds.....	Harry R. Martin.....	Roy B. Darlingston*
Div. 2		W. N. Calkins		
Chase.....	5	Jay Sullivan.....	Mrs. Mildred Speer...	Mrs. Marie Bray
Chautauqua Div. 1	13	George Reynolds.....	Cleophal Call.....	Ima L. Eley
Div. 2		W. N. Calkins		
Cherokee.....	11	Jerome Harman.....	Nina Coldiron.....	Millard P. Knock
Cheyenne.....	17	Robert W. Hemphill..	Charles N. Roberts..	J. L. Finley*
Clark.....	31	Ernest M. Vieux.....	Hope Grimes.....	George M. Pike*
Clay.....	21	Lewis L. McLaughlin..	Hazel K. Chestnut...	Walter O. Curtis*
Cloud.....	12	Marvin O. Brummett..	Mrs. Hazel Eddy.....	Finley Daugherty*
Coffey.....	5	Jay Sullivan.....	Mildred Preston.....	R. S. Luke, Sr.*
Comanche.....	31	Ernest M. Vieux.....	Mary Guyer.....	Gloyd Hadley*
Cowley.....	19	Doyle E. White.....	Sallie K. Smith.....	Keith O. Athearn
Crawford.....	38	L. M. Resler.....	Josephine Callaneo..	Richard Loffswold
Decatur.....	17	Robert W. Hemphill..	Alice J. Vernon.....	George Nellans*
Dickinson.....	8	James P. Coleman.....	Seth Barter, Jr.....	John P. Dieter*
Doniphan.....	22	A. O. Delaney.....	Virgil W. Begesse..	William Strahan*
Douglas.....	41	Frank R. Gray.....	Mrs. Lucille Allison..	Charles Rankin*
Edwards.....	33	Lorin T. Peters.....	John Stoner.....	L. L. Anderson*
Elk..... Div. 1	13	George Reynolds.....	Mrs. Floy B. Magers..	Miriam O. Beaty
Div. 2		W. N. Calkins		
Ellis.....	23	Benedict P. Cruise....	Walter J. Staab.....	Robert F. Glassman*
Ellsworth.....	30	A. R. Buzick.....	Harold E. Grant.....	Gerhard Haase*
Finney.....	32	Roland H. Tate.....	G. Mae Purdy.....	Milward C. Schrader*
Ford.....	31	Ernest M. Vieux.....	Elta J. Riley.....	Keith M. Wilcox*
Franklin.....	4	Floyd H. Coffman.....	Christina Woke.....	Milo L. Harris*
Geary.....	8	James P. Coleman.....	Frank C. Woodward..	G. W. Schmidt*
Gove.....	23	Benedict P. Cruise....	Mrs. Louise Brown...	V. J. Smith*
Graham.....	34	C. E. Burney.....	Louise Lee.....	Ovid E. Middleton*
Grant.....	39	L. L. Morgan.....	Mrs. Juanita Barber..	Veris J. Kinsman
Gray.....	31	Ernest M. Vieux.....	Carrie Borland.....	Grace H. Truax
Greely.....	32	Roland H. Tate.....	Laura M. Holmes....	Hope Owen
Greenwood Div. 1	13	George Reynolds.....	Alma Long.....	B. M. Beyer*
Div. 2		W. N. Calkins		
Hamilton.....	32	Roland H. Tate.....	Amelia J. Minor.....	A. C. Bostwick
Harper.....	24	Clark A. Wallace.....	Helen Pearl.....	Myrtle Youngberg*
Harvey.....	9	Alfred A. Schroeder...	Mrs. Mabel McMullen..	Sam H. Strum*
Haskell.....	39	L. L. Morgan.....	Mrs. Evelyn Yount...	E. D. Bolinger
Hodgeman.....	33	Lorin T. Peters.....	Jane Hoagland.....	Thomas Dunn*
Jackson.....	36	Robert H. Kaul.....	Florence Clements..	I. Winter Funck*
Jefferson.....	36	Robert H. Kaul.....	Mrs. Myrtle Kimmel..	Walter E. Ferris
Jewell.....	15	Donald J. Magaw.....	Iris Cosand.....	Byron Rogers*
Johnson..... Div. 1	10	Earl E. O'Connor.....	Mrs. Betty West.....	James B. Pearson
Div. 2		Clayton Brenner		
Div. 3		Raymond H. Carr		
Keary.....	32	Roland H. Tate.....	Bertha Adams.....	Della M. Brachett*
Kingman.....	24	Clark A. Wallace.....	Gladys Layman.....	Fred Hurd*
Kiowa.....	31	Ernest M. Vieux.....	Eunice E. Rich.....	Harry Paxton
Labette.....	16	Hal Hyler.....	H. L. Lane.....	Dan R. Aul
Lane.....	32	Roland H. Tate.....	Mrs. Eva Cramer.....	Guy H. Patton
Leavenworth.....	1	Joseph J. Dawes.....	Mary Kate Gausz...	Kenneth Harmon
Lincoln.....	30	A. R. Buzick.....	Roy Livingood.....	H. H. Rector*
Linn.....	6	Harry W. Fisher.....	Will H. Bayless.....	F. M. Ball
Logan.....	23	Benedict P. Cruise....	Mrs. Ada Rogge.....	Nell C. Potterf

TABLE A-1.—CONCLUDED. Roster of judicial officials as of July 1, 1956

COUNTY	Jud. dist.	District judge	Clerk of court	Probate judge
Lyon	5	Jay Sullivan	Cleadora Held	Dale Spiegel
Marion	8	James P. Coleman	C. J. Ross	Edward W. Colburn*
Marshall	21	Lewis L. McLaughlin	Wallace J. Koppes	Percy R. Pulliense*
McPherson	9	Alfred G. Schroeder	Donald S. Clark	Eugene D. Christenson
Meade	31	Ernest M. Vieux	Nell Bradley	Julia Craig
Miami	6	Harry W. Fisher	Mrs. Ethel J. Hunt	Elmer E. Thomas*
Mitchell	15	Donald J. Magaw	Ida Jamison	Richard Young*
Montgomery	14	Warren B. Grant	M. D. Smith	David Scott
Morris	8	James P. Coleman	Mrs. Virginia Scholes	A. R. Carpenter*
Morton	39	L. L. Morgan	Mrs. Irene Kuder	Eula B. Sweem
Nemaha	22	A. O. Delaney	Ruth Shaffer	Robert C. Randel
Neosho	7	B. M. Dunham	Mamie Hayes	Louis J. Eaton
Ness	33	Lorin T. Peters	Mrs. Dorothy Stecklein	Clyde Burns*
Norton	17	Robert W. Hemphill	Arthur V. Poage	Jean Kissell*
Osage	35	A. K. Stavelly	Mrs. Shirley Hull	T. L. Tiffany*
Osborne	15	Donald J. Magaw	Elma McColl	Ethel McCammon*
Ottawa	30	A. R. Buzick	Faye Collister	W. D. Lancaster
Pawnee	33	Lorin T. Peters	Mrs. Eulah Almquist	Spencer Ackerman*
Phillips	17	Robert W. Hemphill	Gene Britt	Ira McAlister*
Pottawatomie	36	Robert H. Kaul	Deane L. Arnold	Richard Edwards*
Pratt	24	Clark A. Wallace	Mrs. Mabel Axline	Gladys Scott*
Rawlins	17	Robert W. Hemphill	Mrs. Louise Portschy	Herbert Howland*
Reno	40	John Pontron	Glenn R. Williams	E. Victor Wilson
Republic	12	Marvin O. Brummett	Warren A. Scott	Henry Van Natta*
Rice	20	Roy J. McMullen	Laura Saint	Virginia Bayer*
Riley	21	Lewis L. McLaughlin	Joseph F. Musil	Scott Pfuetze*
Books	34	C. E. Burney	Irma Renner	G. M. James*
Rush	33	Lorin T. Peters	Esta Manahan	Oscar Showalter*
Russell	23	Benedict P. Cruise	George W. Brandt	J. D. Steinkle*
Saline	30	A. R. Buzick	Mrs. Winifred Groth	J. Herb Wilson
Scott	32	Roland H. Tate	Nellie Scheurman	Ralph Hollingsworth*
Sedgwick	Div. 1 Div. 2 Div. 3 Div. 4 Div. 5 Div. 6	18 William C. Kandt Howard C. Kline B. Mack Bryant George A. Brown Henry Martz E. E. Sattgast	L. D. Leland	James V. Riddel, Jr.
Seward	39	L. L. Morgan	Mrs. Mary Lindley	E. S. Irwin*
Shawnee	Div. 1 Div. 2 Div. 3	3 Beryl R. Johnson Paul H. Heinz Dean McElhenny	Mrs. Lucile Carter	Glenn D. Cogswell
Sheridan	34	C. E. Birney	Mrs. Minnie Carder	Wallace W. Cooper*
Sherman	34	C. E. Birney	Viva Peter	Nora Beecham*
Smith	15	Donald J. Magaw	Lucille Fig	E. R. Sonneberg*
Stafford	20	Roy J. McMullen	Arlene McCandless	L. L. Carleton
Stanton	39	L. L. Morgan	Tina B. Wilson	Maurice L. Gillum
Stevens	39	L. L. Morgan	John F. Fulkerson	J. B. Porter*
Sumner	25	Wendell Ready	Laura McCormick	Lewis E. Nugen
Thomas	34	C. E. Birney	Mrs. Winifred Van Horn	Floyd L. Grover*
Trego	23	Benedict P. Cruise	Mrs. Albert Acre	Lucille Wanker*
Wabaunsee	35	A. K. Stavelly	Dorothy M. Walker	W. R. Ekart*
Wallace	23	Benedict P. Cruise	Evelyn P. Warren	F. H. Dobbs*
Washington	12	Marvin O. Brummett	William Anderson	G. I. Thompson*
Wichita	32	Roland H. Tate	Kate Elder	Maggie Gilmore
Wilson	7	B. M. Dunham	Dwaine Spoon	Bess Schmidt
Woodson	37	Spencer A. Gard	Zelma Stockebrand	Coleman Swope*
Wyandotte	Div. 1 Div. 2 Div. 3 Div. 4	29 E. L. Fischer Willard M. Benton Harry G. Miller, Jr. William H. McHale	Richard D. Shannon	O. Q. Clafin, III

\* Also judge of county court.

TABLE A-2.—SUMMARY OF DISTRICT COURTS, BY DISTRICTS  
YEAR ENDING JUNE 30, 1956

Judicial dist.	COUNTY	Civil cases, including divorce				Criminal cases			
		Pending July 1, 1955	Com-menced	Termi-nated	Pending July 1, 1956	Pending July 1, 1955	Com-menced	Termi-nated	Pending July 1, 1956
1	Leavenworth.....	389	443	342	490	29	44	39	34
2	Atchison.....	136	156	177	115	8	35	36	7
3	Shawnee.....	482	1,683	1,536	629	90	379	262	207
4	Anderson.....	25	76	82	19	2	3	4	1
	Franklin.....	43	146	150	39	12	31	29	14
	Totals.....	68	222	232	58	14	34	33	15
5	Chase.....	18	25	32	11	1	3	3	1
	Coffey.....	25	60	74	11	0	6	5	1
	Lyon.....	115	306	314	107	4	25	20	9
	Totals.....	158	391	420	129	5	34	28	11
6	Bourbon.....	60	167	144	83	24	17	26	15
	Linn.....	49	79	80	48	10	5	5	10
	Miami.....	64	133	153	44	4	12	15	1
	Totals.....	173	379	377	175	38	34	46	26
7	Neosho.....	56	125	125	56	2	23	21	4
	Wilson.....	62	116	112	66	7	14	15	6
	Totals.....	118	241	237	122	9	37	36	10
8	Dickinson.....	32	154	129	57	6	34	29	11
	Geary.....	80	217	190	107	11	45	48	8
	Marion.....	14	60	35	39	1	19	17	3
	Morris.....	18	52	47	23	2	20	19	3
	Totals.....	144	483	401	226	20	118	113	25
9	Harvey.....	65	138	160	43	6	38	36	8
	McPherson.....	41	120	111	50	2	17	17	2
	Totals.....	106	258	271	93	8	55	53	10
10	Johnson.....	520	889	754	655	53	73	80	46
11	Cherokee.....	150	201	211	140	5	24	23	6
12	Cloud.....	40	70	82	28	2	3	5	0
	Republic.....	27	42	47	22	1	8	7	2
	Washington.....	16	68	60	24	1	6	6	1
	Totals.....	83	180	189	74	4	17	18	3
13	Butler.....	290	369	334	325	70	236	216	90
	Chautauqua.....	31	73	65	39	1	4	4	1
	Elk.....	18	46	46	18	0	7	5	2
	Greenwood.....	61	120	137	44	1	6	7	0
	Totals.....	400	608	582	426	72	253	232	93
14	Montgomery.....	178	432	386	224	22	113	110	25
15	Jewell.....	21	33	33	21	1	7	7	1
	Mitchell.....	17	31	31	17	0	6	5	1
	Osborne.....	28	56	54	30	0	3	0	3
	Smith.....	21	32	29	24	2	2	1	3
	Totals.....	87	152	147	92	3	18	13	8

TABLE A-2.—CONTINUED. Summary of district courts, by districts—year ending June 30, 1956

Judicial dist.	COUNTY	Civil cases, including divorce				Criminal cases			
		Pending July 1, 1955	Com-menced	Terminated	Pending July 1, 1956	Pending July 1, 1955	Com-menced	Terminated	Pending July 1, 1956
16	Labette.....	86	229	213	102	13	29	31	11
17	Cheyenne.....	14	15	22	7	0	3	3	0
	Decatur.....	15	52	55	12	1	1	2	0
	Norton.....	33	40	57	16	2	6	8	0
	Phillips.....	26	47	60	13	0	5	4	1
	Rawlins.....	15	20	27	8	1	8	8	1
	Totals.....	103	174	221	56	4	23	25	2
18	Sedgwick.....	2,983	4,534	3,841	3,676	155	1,018	837	336
19	Cowley.....	169	345	339	175	24	65	79	10
20	Barton.....	160	313	331	142	17	49	55	11
	Rice.....	33	82	83	32	3	12	14	1
	Stafford.....	27	63	68	22	4	20	21	3
	Totals.....	220	458	482	196	24	81	90	15
21	Clay.....	28	32	34	26	2	9	8	3
	Marshall.....	22	77	60	39	2	8	8	2
	Riley.....	93	176	158	111	10	36	39	7
	Totals.....	143	285	252	176	14	53	55	12
22	Brown.....	26	82	84	24	3	10	12	1
	Doniphan.....	31	56	50	37	1	8	6	3
	Nemaha.....	20	50	54	16	2	6	1	7
	Totals.....	77	188	188	77	6	24	19	11
23	Ellis.....	49	88	80	57	3	20	22	1
	Gove.....	11	26	26	11	1	0	1	0
	Logan.....	13	24	30	7	2	4	6	0
	Russell.....	84	100	118	66	3	15	11	7
	Trego.....	10	24	23	11	0	8	7	1
	Wallace.....	2	10	10	2	0	3	3	0
	Totals.....	169	272	287	154	9	50	50	9
24	Barber.....	21	42	50	13	1	6	4	3
	Harper.....	12	45	47	10	3	30	26	7
	Kingman.....	16	66	53	29	1	3	4	0
	Pratt.....	37	97	98	36	3	11	10	4
	Totals.....	86	250	248	88	8	50	44	14
25	Sumner.....	79	207	223	63	7	16	18	5
29	Wyandotte.....	2,693	2,443	2,007	3,129	198	357	315	240
30	Ellsworth.....	10	49	45	14	0	8	4	4
	Lincoln.....	2	22	16	8	0	4	3	1
	Ottawa.....	10	32	31	11	0	6	5	1
	Saline.....	315	425	357	383	12	72	66	18
	Totals.....	337	528	449	416	12	90	78	24
31	Clark.....	8	25	23	10	1	4	5	0
	Comanche.....	14	12	19	7	0	1	1	0
	Ford.....	88	141	160	69	4	28	24	8
	Gray.....	10	38	22	26	0	5	1	4
	Kiowa.....	7	29	22	14	0	6	5	1
	Meade.....	16	29	28	17	2	4	5	1
	Totals.....	143	274	274	143	7	48	41	14

TABLE A-2.—CONCLUDED. Summary of district courts, by districts—year ending June 30, 1956

Judicial dist.	COUNTY	Civil cases, including divorcee				Criminal cases			
		Pending July 1, 1955	Com-menced	Terminated	Pending July 1, 1956	Pending July 1, 1955	Com-menced	Terminated	Pending July 1, 1956
32	Finney.....	86	130	119	97	13	47	42	18
	Greeley.....	20	36	32	24	0	0	0	2
	Hamilton.....	17	39	40	16	1	8	7	2
	Kearny.....	34	22	23	33	0	8	6	2
	Lane.....	13	22	22	13	1	1	1	1
	Scott.....	31	39	54	16	1	1	1	1
	Wichita.....	3	15	10	8	0	4	4	0
	Totals.....	204	303	300	207	16	68	60	24
33	Edwards.....	20	29	31	18	5	12	16	1
	Hodgeman.....	11	16	20	7	0	5	3	2
	Ness.....	13	30	30	13	0	5	4	1
	Pawnee.....	37	80	82	35	2	15	15	2
	Rush.....	27	34	40	21	3	4	6	1
	Totals.....	108	189	203	94	10	41	44	7
34	Graham.....	23	50	50	23	2	1	2	1
	Rooks.....	29	66	58	37	5	9	9	5
	Sheridan.....	17	25	24	18	0	2	0	2
	Sherman.....	27	52	52	27	12	4	13	3
	Thomas.....	9	46	43	12	2	6	4	4
	Totals.....	105	239	227	117	21	22	28	15
35	Osage.....	36	108	116	28	0	18	16	2
	Wabaunsee.....	10	36	31	15	1	4	5	0
	Totals.....	46	144	147	43	1	22	21	2
36	Jackson.....	16	77	60	33	6	22	24	4
	Jefferson.....	37	96	87	46	10	11	20	1
	Pottawatomie.....	29	77	66	40	9	12	12	9
	Totals.....	82	250	213	119	25	45	56	14
37	Allen.....	63	129	130	62	5	21	19	7
	Woodson.....	17	47	48	16	2	5	7	0
	Totals.....	80	176	178	78	7	26	26	7
38	Crawford.....	303	351	253	401	13	50	44	19
39	Grant.....	9	32	26	15	1	3	3	1
	Haskell.....	5	23	20	8	0	3	2	1
	Morton.....	19	58	49	28	2	8	6	4
	Seward.....	51	120	109	62	7	37	28	16
	Stanton.....	6	10	10	6	1	0	0	1
	Stevens.....	13	25	25	13	1	7	7	1
	Totals.....	103	268	239	132	12	58	46	24
40	Reno.....	413	716	725	404	43	123	129	37
41	Douglas.....	142	253	255	140	29	86	86	29
	Grand totals...	12,066	19,794	18,026	13,834	1,038	3,713	3,344	1,407

SUMMARY OF DISTRICT COURTS—BY COUNTIES  
 TABLES A-3 and A-4 COMBINED.—DISPOSITION OF CIVIL CASES, INCLUDING DIVORCE—YEAR ENDING JUNE 30, 1956

COUNTIES	Total number of cases	Foreign transcripts	Divorce cases						Other civil cases					
			Number	Dismissed	Denied	Emergency declared	Granted to wife	Granted to husband	Alimony or property awarded	Was child support awarded	Number	Dismissed	Tried to court	Tried to jury
Allen.....	130	1	17	1	1	1	29	12	22	9	70	27	40	3
Anderson.....	82	4	10	1	1	0	5	2	2	0	60	21	31	8
Atchison.....	177	0	30	0	0	0	28	6	5	8	113	28	83	2
Barber*	49	1	9	0	0	0	13	2	4	7	24	5	19	0
Barton.....	331	15	50	0	0	2	68	9	40	34	189	77	106	6
Bourbon.....	144	3	28	0	0	11	35	16	13	13	62	21	41	0
Brown.....	84	1	8	0	0	2	15	5	4	4	55	9	42	4
Butler*	331	6	30	0	0	2	77	34	33	48	184	69	98	17
Chase.....	32	2	4	0	0	0	6	2	5	3	18	4	12	2
Chautauqua.....	65	1	2	0	0	1	7	2	9	3	53	14	38	1
Cherokee†	210	7	34	0	0	1	40	17	23	22	112	39	69	4
Cheyenne.....	22	0	2	0	0	1	2	0	2	0	18	8	10	0
Clark.....	23	1	1	0	0	0	1	1	0	0	20	5	14	1
Clay.....	34	0	7	0	0	0	10	1	3	7	16	2	14	0
Cloud.....	82	5	4	0	0	3	11	4	7	4	58	26	30	2
Coffey*	71	1	2	0	0	1	9	0	1	6	59	7	52	0
Comanche.....	19	0	2	0	0	1	1	0	0	1	15	2	13	0
Cowley.....	339	13	67	0	0	6	87	33	53	48	139	43	87	9
Crawford.....	253	11	77	0	0	7	49	17	31	15	165	70	90	5
Decatur.....	55	0	6	0	0	0	7	1	2	6	41	5	34	2
Dickinson*	128	2	15	0	0	0	28	7	17	16	76	12	64	0
Doniphan.....	50	1	8	0	0	0	5	3	2	2	33	14	19	0
Douglas†	255	0	23	0	0	1	57	18	3	32	157	55	90	12
Edwards.....	31	0	1	0	0	0	7	3	4	4	20	7	12	1
Elk.....	46	3	2	0	0	0	4	2	3	1	35	9	25	1

\* Additional cases which were removed to the Federal Court: Barber County, 1; Butler County, 3; Cherokee County, 1; Coffey County, 3; Dickinson County, 1.

† Additional jury trials resulting in mistrials in cases which are still pending and not terminated: Cherokee County, 1.

‡ Additional jury trial resulting in a mistrial in a case which was later dismissed: Douglas County.

TABLES A-3 and A-4.—CONTINUED. Disposition of civil cases, including divorce—year ending June 30, 1956

COUNTIES	Total number of cases	Foreign transcripts	Divorce cases						Other civil cases					
			Number	Dismissed	Denied	Emergency declared	Granted to wife	Granted to husband	Alimony or property awarded	Was child support awarded	Number	Dismissed	Tried to court	Tried to jury
Ellis.....	80	0	14	12	1	0	1	0	1	0	66	12	54	0
Ellsworth.....	45	1	15	3	0	0	10	0	6	6	29	10	18	1
Finney†.....	119	1	44	8	0	3	17	19	19	12	74	29	41	4
Ford.....	160	0	61	22	1	2	32	16	16	21	99	43	49	7
Franklin** ††.....	149	7	66	19	0	2	38	9	17	14	76	27	45	4
Geary*.....	189	1	113	32	0	15	49	32	18	27	75	25	50	0
Gove.....	26	0	4	2	0	0	0	0	0	0	22	10	12	0
Graham.....	50	4	10	0	0	0	3	2	2	1	36	7	28	1
Grant.....	26	1	16	6	0	1	9	1	3	1	9	3	6	0
Gray.....	22	0	5	2	0	0	1	2	1	1	17	11	6	0
Greeley.....	32	4	8	2	0	0	5	1	1	1	20	5	15	0
Greenwood.....	137	0	31	8	0	2	18	5	4	9	106	19	86	1
Hamilton.....	40	0	18	3	0	3	13	2	5	6	22	9	13	0
Harper.....	47	1	14	6	0	0	2	6	4	4	32	10	22	0
Harvey*†.....	158	7	24	13	0	0	8	1	6	7	127	47	76	4
Haskell.....	20	0	7	2	1	0	4	0	0	1	13	8	5	0
Hodgeman.....	20	1	3	0	0	0	3	0	1	1	16	5	9	2
Jackson.....	60	3	15	3	0	0	10	2	4	5	42	6	36	0
Jefferson.....	87	9	18	3	0	0	13	2	6	7	60	11	46	3
Jewell.....	33	1	7	2	0	0	4	1	2	0	25	9	16	0
Johnson*.....	753	89	249	61	2	4	157	29	134	97	415	161	228	26
Kearny†.....	23	0	7	1	0	1	4	2	3	0	16	3	12	1
Kingman*.....	52	0	19	3	0	0	10	6	11	9	33	10	22	1
Kiowa.....	22	2	3	1	0	0	2	0	1	0	17	7	9	1
Labette*.....	210	0	88	27	0	2	48	13	52	25	122	46	70	6
Lane†.....	22	2	6	2	0	0	4	0	2	4	14	2	11	1
Leavenworth†.....	342	14	108	21	1	3	67	19	28	31	220	50	161	9
Lincoln.....	16	0	5	0	0	0	4	1	5	1	11	2	8	1
Linn.....	80	1	15	3	0	0	9	3	5	4	64	5	55	2
Logan.....	30	0	10	2	1	0	5	3	2	4	20	5	14	1

†† Additional jury trial resulting in a mistrial in a case in which judgment was rendered later by the court; Finney County.  
 † Additional jury trial resulting in a mistrial in a case which was tried again later by jury; Franklin County.  
 \* Additional cases which were removed to the Federal Court; Geary County, 1; Harvey County, 2; Johnson County, 1; Kingman County, 1; Labette County, 3.  
 \*\* One additional case which was removed on change of venue to Anderson County.  
 † Additional jury trials resulting in mistrials; Lane County, 1; case still pending; Leavenworth County, 1; case tried again by jury.  
 † Additional jury trials; Kearny County, 1; judgment not rendered, case still pending; Harvey County, 1; case later settled and dismissed.



TABLES A-3 and A-4.—Continued. Disposition of civil cases, including divorce—year ending June 30, 1956

COUNTRIES	Total number of cases	Foreign transcripts	Divorce cases						Other civil cases				
			Number dismissed	Denied	Emergency declared	Granted to wife	Granted to husband	Alimony or property awarded	Was child support awarded	Number dismissed	Tried to court	Tried to jury	
Lyon*	313	16	10	2	10	48	11	5	28	226	30	134	62
Marion	35	0	10	0	0	3	0	1	3	22	2	20	0
Marshall*	55	2	6	1	0	5	5	6	3	36	1	23	2
McPherson*	108	8	17	0	0	8	1	5	6	83	26	53	4
Meade	28	0	7	0	0	5	1	2	0	21	2	19	0
Miami*	152	7	22	0	2	22	11	5	13	00	30	57	3
Mitchell*	30	0	2	0	0	8	1	9	7	13	4	14	1
Montgomery*	383	27	53	1	3	88	26	47	40	188	62	119	7
Morriss	47	1	3	0	0	8	2	3	4	33	11	22	0
Morton	49	1	5	0	0	10	0	5	6	33	9	22	2
Nemaha	54	1	1	0	0	4	2	2	2	46	14	32	0
Neosho*	124	7	16	0	3	41	11	22	23	49	20	28	1
Ness†	30	1	0	0	0	0	0	0	1	33	7	19	1
Norton*	55	0	7	0	0	8	2	0	6	33	4	23	6
Osage	116	5	9	1	1	11	6	5	3	84	20	55	9
Osborne	54	0	15	0	1	5	3	8	5	39	3	36	0
Ottawa	31	0	9	0	0	7	0	6	2	22	6	16	0
Pawnee	82	6	12	0	0	17	5	15	2	42	20	21	1
Phillips	60	0	25	0	0	11	3	4	7	35	3	20	3
Pottawatomie	66	0	13	0	2	9	3	10	4	53	13	40	0
Pratt†	98	2	17	1	1	14	6	5	5	59	20	34	5
Rawlins	27	0	3	1	0	2	3	3	3	18	8	10	0
Reno*	724	105	145	0	22	156	54	25	73	264	130	124	10
Republic	47	0	6	0	0	4	4	7	3	32	12	19	1
Rice*	82	2	12	0	1	15	5	14	8	48	10	32	6

\* Additional cases which were removed to the Federal Court: Lyon County, 1; Marshall County, 5; McPherson County, 3; Miami County, 1; Mitchell County, 1; Montgomery County, 3; Neosho County, 1; Norton County, 2; Reno County, 1; Rice County, 1.  
 † Additional jury trials resulting in mistrials: Ness County, 1; case later tried by court; Pratt County, 1; case still pending.  
 ‡ Additional jury trials: Mitchell County, 1; and Morris County, 1; new trials granted.

TABLES A-3 and A-4.—CONCLUDED. Disposition of civil cases, including divorce—year ending June 30, 1956

COUNTRIES	Total number of cases	Foreign transcripts	Divorce cases						Other civil cases					
			Number	Dismissed	Denied	Emergency declared	Granted to wife	Granted to husband	Alimony or property awarded	Was child support awarded	Number	Dismissed	Tried to court	Tried to jury
Riley.....	158	7	68	19	0	3	34	15	36	25	83	35	46	2
Rooks.....	58	0	25	3	0	1	10	7	7	3	33	13	20	0
Rush.....	40	3	7	8	0	0	3	1	2	3	30	30	24	1
Russell.....	118	1	44	22	2	0	16	4	19	12	73	35	36	2
Saline*.....	355	0	217	57	0	0	102	58	88	61	138	53	80	5
Scott.....	54	0	16	7	0	1	8	1	7	3	38	12	21	5
Sedgwick*.....	3,832	321	1,983	730	0	66	973	279	669	301	1,938	697	799	32
Seward.....	1,109	1	65	26	0	0	31	8	20	18	43	17	26	0
Shawnee*†.....	1,534	0	808	305	2	41	407	94	299	182	736	379	304	43
Sheridan.....	24	1	2	0	0	0	1	1	0	1	21	1	20	0
Sherman†.....	52	0	11	7	0	0	4	0	3	2	41	15	25	1
Smith.....	29	2	10	0	0	2	8	2	5	2	17	5	9	3
Stafford.....	68	3	16	4	0	1	10	2	7	0	49	11	36	2
Stanton.....	10	0	0	0	0	0	0	0	0	0	10	3	7	0
Stevens*.....	24	0	14	4	0	0	5	5	0	4	10	3	6	1
Sumner*.....	222	24	81	30	0	0	36	15	29	20	117	54	62	1
Thomas*.....	42	0	22	7	0	0	11	4	8	11	90	2	18	0
Trego.....	23	2	6	3	0	0	3	0	3	2	15	2	13	0
Wabausee.....	31	4	3	2	0	1	1	0	1	1	24	4	20	0
Wallace.....	10	2	0	0	0	0	0	0	0	0	8	0	8	0
Washington.....	60	2	10	3	0	0	7	0	2	1	48	8	40	0
Wichita.....	110	0	3	1	0	0	1	1	7	3	7	3	4	0
Wilson.....	112	0	43	18	1	0	22	2	12	12	69	28	37	4
Woodson.....	48	4	13	3	0	1	6	4	12	4	31	4	27	0
Wyandotte*†.....	1,998	0	1,132	443	2	42	547	140	355	285	866	411	418	37
Totals.....	17,964	795	7,832	2,715	25	283	3,908	1,184	2,464	1,880	9,337	3,455	5,463	419

\* Additional cases which were removed to the Federal Court: Saline County, 2; Sedgwick County, 9; Shawnee County, 2; Stevens County, 1; Sumner County, 1; Thomas County, 1; Wyandotte County, 9.  
 † Additional jury trials resulting in mistrials: Shawnee County, 2; one of which is still pending; the other was tried again by jury.  
 ‡ Additional jury trials: Sherman County, 1 case in which a new trial was granted; Wyandotte, 1 case which was later dismissed.

TABLE A-5.—DISTRICT COURTS  
 TYPES OF CIVIL CASES COMMENCED—STATE AS A WHOLE—COMPARED WITH  
 1946-1947-1948-1949-1950-1951-1952-1953-1954-1955 AND 1956

	Year ending June 30, 1946	Year ending June 30, 1947	Year ending June 30, 1948	Year ending June 30, 1949	Year ending June 30, 1950	Year ending June 30, 1951	Year ending June 30, 1952	Year ending June 30, 1953	Year ending June 30, 1954	Year ending June 30, 1955	Year ending June 30, 1956
Number of cases*.....	22,301	19,788	18,100	16,325	16,380	15,945	16,494	17,956	18,190	18,379	18,999
Recovery of money.....	966	1,230	1,559	1,709	1,861	1,971	2,064	1,882	2,708	2,919	2,314
Damages.....	806	1,013	998	1,018	1,192	1,000	1,075	1,581	1,307	1,158	1,718
Foreclosures.....	111	97	120	174	222	206	172	183	270	237	430
Quiet title.....	4,134	4,208	3,729	2,895	2,296	2,283	2,053	1,864	1,666	1,805	1,746
Divorce.....	13,476	10,247	8,716	7,809	8,092	7,722	8,656	9,223	8,773	8,743	8,566
Replevin.....	72	147	159	197	184	157	169	189	199	166	219
Ejectment.....	63	48	39	16	33	45	55	40	39	46	39
Injunction.....	274	248	264	213	262	230	253	274	296	233	250
Partition.....	496	454	404	362	324	314	310	333	285	304	290
Tax cases.....	97	110	73	65	60	37	33	51	42	24	40
Habeas corpus.....	55	73	95	78	94	79	89	80	92	116	131
Appeals—Probate.....	91	94	127	133	143	146	127	134	128	135	120
Other appeals.....	284	383	521	445	492	446	445	520	766	810	1,089
Miscellaneous.....	1,380	1,436	1,296	1,271	1,185	1,309	1,448	1,602	1,622	1,683	2,047

\* Does not include 795 foreign transcripts included in total of 19,794 on Table A-2, June 30, 1956, or 790 foreign transcripts included in total of 19,169 on Table A-2, June 30, 1955, or 348 foreign transcripts included in total of 18,538 on Table A-2, June 30, 1954, or 309 foreign transcripts included in total of 18,265 on Table A-2, June 30, 1953, or 325 foreign transcripts included in total of 17,274 on Table A-2, June 30, 1952, or 596 foreign transcripts included in total of 16,541 on Table A-2, June 30, 1951, or 579 foreign transcripts included in total of 16,959 on Table A-2, June 30, 1950, or 486 foreign transcripts included in total of 16,811 on Table A-2, June 30, 1949.

NOTE.—Personal tax warrants are not included as cases in any of these tables.

SUMMARY OF DISTRICT COURTS BY COUNTIES  
 TABLE B-1 (CONDENSED).—DISPOSITION OF CRIMINAL CASES—  
 YEAR ENDING JUNE 30, 1956

COUNTIES	Number of cases	Dis-missed	Plea of guilty as charged	Plea of guilty of lesser offense	Trials			
					Convicted of crime charged	Convicted of lesser offense	Ac- quitted	Mis- trials
Allen.....	19	8	5	1	3	0	2	0
Anderson.....	4	2	1	1	0	0	0	0
Atchison.....	36	7	18	8	1	0	2	0
Barber.....	4	2	2	0	0	0	0	0
Barton.....	55	28	25	0	1	1	0	0
Bourbon*	25	10	11	2	0	1	1	0
Brown.....	12	5	6	0	1	0	0	0
Butler.....	216	96	101	14	3	1	1	0
Chase.....	3	1	1	1	0	0	0	0
Chautauqua.....	4	0	3	0	1	0	0	0
Cherokee.....	23	9	5	5	3	0	1	1
Cheyenne.....	3	0	3	0	0	0	0	0
Clark.....	5	2	1	2	0	0	0	0
Clay.....	8	3	5	0	0	0	0	0
Cloud.....	5	1	4	0	0	0	0	0
Coffey.....	5	0	5	0	0	0	0	0
Comanche.....	1	1	0	0	0	0	0	0
Cowley.....	79	24	44	5	4	0	2	0
Crawford.....	44	6	27	11	0	0	0	0
Decatur.....	2	1	1	0	0	0	0	0
Dickinson.....	29	13	14	1	1	0	0	0
Doniphan.....	6	1	4	1	0	0	0	0
Douglas.....	86	35	27	12	7	2	3	2
Edwards.....	16	4	11	0	0	0	1	0
Elk.....	5	0	3	1	0	0	1	0
Ellis.....	22	7	13	1	1	0	0	0
Ellsworth.....	4	1	0	2	0	0	1	0
Finney.....	42	16	22	2	2	0	0	2
Ford.....	24	6	14	3	0	0	1	0
Franklin.....	29	17	5	3	1	1	2	1
Gearry.....	48	17	27	2	1	1	0	0
Gove.....	1	1	0	0	0	0	0	0
Graham.....	2	0	2	0	0	0	0	0
Graham.....	3	0	3	0	0	0	0	0
Grant.....	3	0	0	0	0	1	0	0
Gray.....	1	0	0	0	0	1	0	0
Greeley.....	0	0	0	0	0	0	0	0
Greenwood.....	7	3	3	0	1	0	0	0
Hamilton.....	7	2	4	0	1	0	0	0
Harper.....	26	7	11	2	5	0	1	0
Harvey†.....	36	11	14	6	3	0	2	0
Haskell.....	2	0	2	0	0	0	0	0
Hodgeman.....	3	2	0	1	0	0	0	1
Jackson.....	24	1	21	0	1	0	1	0
Jackson.....	20	11	4	0	4	0	1	0
Jefferson.....	7	3	3	0	1	0	0	0
Jewell.....	7	3	3	0	1	0	0	0
Johnson.....	80	30	25	4	12	2	7	0
Kearny.....	6	0	6	0	0	0	0	0
Kingman.....	4	1	2	0	0	0	1	0
Kingman.....	5	2	3	0	0	0	0	0
Kiowa.....	5	2	3	0	0	0	0	0
Labette.....	31	17	10	0	0	1	3	0

\* Additional cases in which the defendants were tried and adjudged insane: Bourbon County, 1.  
 † One additional jury trial in which the decision was later reversed by the court: Harvey County.

TABLE B-1 (Condensed).—CONCLUDED. Disposition of criminal cases—year ending June 30, 1956

COUNTIES	Number of cases	Dis-missed	Plea of guilty as charged	Plea of guilty of lesser offense	Trials			
					Convicted of crime charged	Convicted of lesser offense	Ac- quitted	Mis- trials
Lane.....	1	0	1	0	0	0	0	0
Leavenworth†.....	38	20	7	5	3	3	0	0
Lincoln.....	3	0	0	2	0	0	1	0
Linn.....	5	4	1	0	0	0	0	0
Logan.....	6	1	5	0	0	0	0	0
Lyon.....	20	5	13	1	0	0	1	0
Marion.....	17	3	14	0	0	0	0	1
Marshall.....	8	3	4	1	0	0	0	0
McPherson.....	17	2	14	0	0	0	1	0
Meade.....	5	1	3	0	0	0	1	0
Miami.....	15	2	11	1	1	0	0	0
Mitchell.....	5	0	4	0	0	0	1	0
Montgomery.....	110	39	52	5	9	2	3	2
Morris.....	19	8	8	1	2	0	0	0
Morton.....	6	0	2	4	0	0	0	0
Nemaha.....	1	0	0	0	0	0	1	0
Neosho.....	21	5	11	2	3	0	0	0
Ness.....	4	0	3	0	0	0	1	0
Norton.....	8	1	7	0	0	0	0	0
Osage.....	16	3	13	0	0	0	0	0
Osborne.....	0	0	0	0	0	0	0	0
Ottawa.....	5	3	2	0	0	0	0	0
Pawnee.....	15	5	7	2	1	0	0	0
Phillips.....	4	0	3	0	1	0	0	0
Pottawatomie.....	12	2	5	3	2	0	0	0
Pratt.....	10	2	4	3	1	0	0	0
Rawlins.....	8	2	3	3	0	0	0	0
Reno.....	129	39	73	9	6	0	2	0
Republic.....	7	5	2	0	0	0	0	0
Rice.....	14	2	11	0	0	0	1	0
Riley.....	39	11	18	7	3	0	0	0
Rooks.....	9	3	6	0	0	0	0	0
Rush.....	6	0	4	0	2	0	0	0
Russell.....	11	3	4	3	1	0	0	0
Saline.....	66	36	21	5	1	1	2	2
Scott.....	4	2	2	0	0	0	0	0
Sedgwick.....	837	316	459	33	16	2	11	1
Seward.....	28	16	9	2	1	0	0	2
Shawnee.....	262	110	69	78	0	4	1	0
Sheridan.....	0	0	0	0	0	0	0	0
Sherman.....	13	8	5	0	0	0	0	0
Smith.....	1	0	0	0	1	0	0	0
Stafford.....	21	4	14	1	1	0	1	0
Stanton.....	0	0	0	0	0	0	0	0
Stevens.....	7	2	5	0	0	0	0	0
Sumner.....	18	12	4	1	0	0	1	0
Thomas.....	4	1	3	0	0	0	0	0
Trego.....	7	0	6	0	1	0	0	0
Wabausee.....	5	3	1	1	0	0	0	0
Wallace.....	3	2	1	0	0	0	0	0
Washington.....	6	1	5	0	0	0	0	0
Wichita.....	0	0	0	0	0	0	0	0
Wilson.....	15	5	10	0	0	0	0	0
Woodson.....	7	2	4	1	0	0	0	0
Wyandotte*.....	313	206	55	39	4	5	4	3
Totals.....	3,340	1,314	1,509	304	118	28	67	18

† Additional cases in which the defendants were found to be insane before trial: Leavenworth County, 1.

\* Additional cases in which the defendants were tried and adjudged insane: Wyandotte County,

\* Additional cases in which the defendants were tried and adjudged insane: Wyandotte County, 2.

TABLE B-3.—NATURE OF CRIMES—STATE AS A WHOLE  
(CRIMINAL CASES COMMENCED IN DISTRICT COURTS)

	1942	1943	1949	1950	1951	1952	1953	1954	1955	1956
<b>Felonies:</b>										
Murder.....	29	35	39	37	29	37	45	29	37	25
Manslaughter.....	13	12	11	24	28	34	28	40	31	38
Rape.....	53	52	57	63	56	82	68	61	39	64
Robbery.....	65	21	50	78	78	77	89	72	71	112
Felonious assault.....	69	45	71	98	85	90	84	93	92	79
Other crimes against person	26	11	54	46	61	40	44	58	75	73
Arson.....	16	13	17	14	15	12	14	20	13	14
Forgery.....	153	133	210	241	191	150	221	234	212	256
Grand larceny.....	303	194	246	298	325	277	341	305	252	287
Auto larceny.....	48	41	51	70	51	56	63	61	43	52
Embezzlement.....	24	17	21	30	22	19	37	33	35	31
Burglary.....	177	133	284	346	337	294	279	345	347	342
Other crimes against property.....	37	24	81	71	84	79	76	79	80	113
Desertion (wife or child)...	103	71	184	209	176	237	257	287	302	267
Narcotics.....	8	2	13	3	2	7	6	4	9	10
Bad checks.....	50	22	183	212	191	174	217	256	286	355
Other felonies.....	61	111	38	67	46	67	74	49	95	70
Total felonies.....	1,235	937	1,610	1,907	1,777	1,762	1,943	2,026	2,019	2,188
<b>Misdemeanors:</b>										
Assault.....	41	71	60	38	46	34	48	40	28	27
Petty larceny.....	39	36	44	38	44	31	15	23	17	16
Liquor.....	535	339	286	185	239	287	319	319	388	438
Disturbing peace.....	23	12	20	23	20	9	13	8	15	12
Traffic offense.....	50	89	86	56	35	34	50	43	130	49
Bad checks.....	3	19	1	14	21	6	0	1	22	0
Other misdemeanors.....	93	121	262	55	66	99	59	41	76	57
Total misdemeanors...	784	687	759	409	471	500	504	475	676	599
Total cases*.....	2,019	1,624	2,369	2,316	2,248	2,262	2,447	2,501	2,695	2,787

\* Does not include 926 Police Court Appeals in total of 3,713 cases June 30, 1956, or 505 Police Court Appeals in the total of 2,695 cases June 30, 1955, or 559 Police Court Appeals in the total of 2,501 cases June 30, 1954, or 543 Police Court Appeals in the total of 2,447 cases June 30, 1953, or 632 Police Court Appeals in the total of 2,262 cases June 30, 1952, or 440 Police Court Appeals in the total of 2,248 cases June 30, 1951, or 461 Police Court Appeals in the total of 2,316 cases June 30, 1950.

PROBATE COURTS  
TABLE C-1.—SUMMARY OF BUSINESS HANDLED—YEAR ENDING JUNE 30, 1956

COUNTIES	Estates of decedents		Guardianships		Trusts under supervision	Juvenile cases	Habeas corpus hearings	Orders in absence of district judge	Adoption proceedings	Insanity hearings	Determination of descent	Miscellaneous	Foreign transcripts
	Opened during year	Closed during year	Opened during year	Closed during year									
Allen.....	34	30	10	6	7	3	0	0	11	6	28	1	6
Anderson.....	31	37	5	2	3	1	0	0	9	15	14	6	14
Atchison.....	44	39	16	3	8	28	0	0	18	33	28	10	18
Barber.....	85	26	7	0	9	2	0	8	6	0	9	10	15
Barton.....	87	86	28	19	24	8	1	2	21	18	13	11	42
Bourbon.....	40	46	20	5	2	0	0	0	7	23	24	0	5
Brown.....	57	39	10	7	15	0	0	0	3	3	17	0	22
Butler.....	73	70	23	13	9	11	0	0	29	17	45	3	43
Chase.....	19	7	9	1	3	3	0	0	2	0	3	0	21
Chautauqua.....	28	25	8	5	3	1	0	0	4	7	14	0	26
Cherokee.....	41	46	17	6	5	0	0	0	18	4	25	0	17
Cheyenne.....	13	6	5	1	0	0	0	0	0	0	7	0	8
Clark.....	13	7	4	2	6	0	0	0	2	1	4	0	10
Clay.....	60	52	5	4	9	5	0	0	6	8	17	4	16
Cloud.....	57	54	12	10	12	0	0	0	5	27	13	0	17
Coffey.....	31	26	2	3	3	0	0	0	2	4	25	1	9
Comanche.....	11	8	2	0	0	0	0	0	0	6	4	0	4
Cowley.....	115	105	31	20	15	43	0	0	17	45	53	12	32
Crawford.....	97	56	33	9	9	0	0	0	22	41	57	0	27
Decatur.....	28	18	4	1	0	0	0	0	3	5	8	4	7
Dickinson.....	76	86	11	3	32	13	0	14	19	3	16	2	19
Doniphan.....	34	34	15	4	7	0	0	2	7	9	10	2	7
Douglas.....	70	43	14	7	22	8	0	0	19	31	43	2	24
Edwards.....	22	27	3	1	1	0	0	2	4	5	24	4	6
Elk.....	20	21	7	0	1	3	0	0	0	3	12	7	9

TABLE C-1.—CONTINUED. Summary of business handled—year ending June 30, 1956

COUNTIES	Estates of decedents		Guardianships		Trusts under supervision	Juvenile cases	Habeas corpus hearings	Orders in absence of district judge	Adoption proceedings	Insanity hearings	Determination of descent	Miscellaneous	Foreign transcripts
	Opened during year	Closed during year	Opened during year	Closed during year									
	year	year	year	year	year	year	year	year	year	year	year	year	year
Ellis.....	65	64	21	12	5	0	0	9	4	9	12	17	72
Elkworth.....	45	40	6	4	6	0	0	0	9	4	8	0	16
Finney.....	24	23	0	2	3	14	0	6	22	17	21	0	26
Ford.....	37	24	12	5	6	0	1	0	13	20	22	5	2
Franklin.....	53	53	14	6	16	17	0	0	10	20	17	0	9
Geary.....	34	41	11	10	7	13	0	0	41	13	30	3	3
Gove.....	15	13	3	4	0	0	0	4	4	2	8	0	19
Graham.....	33	0	4	2	3	0	0	0	0	3	12	0	27
Grant.....	12	3	4	3	2	1	0	0	3	0	4	2	17
Gray.....	12	12	1	1	1	0	0	1	3	9	6	2	21
Greeley.....	4	5	2	0	0	0	0	0	6	0	2	0	10
Greenwood.....	47	42	11	4	4	0	0	0	6	8	9	0	24
Hamilton.....	8	5	5	3	3	2	0	9	5	4	15	1	12
Harper.....	36	38	4	5	14	4	0	8	1	3	19	1	16
Harvey.....	54	48	15	10	20	0	0	0	14	30	21	0	18
Haskell.....	9	4	2	0	0	0	0	0	0	0	4	0	1
Hodgeman.....	7	10	4	7	4	0	0	0	1	10	0	0	18
Jackson.....	27	34	13	8	3	4	1	7	6	11	22	2	13
Jefferson.....	33	44	18	4	1	0	1	4	6	14	36	1	20
Jewell.....	29	29	8	1	1	1	0	0	8	10	27	0	12
Johnson.....	118	95	25	18	42	22	0	0	66	43	69	18	27
Kearny.....	3	3	0	2	0	0	0	0	2	2	7	0	22
Kingman.....	30	42	10	5	6	0	0	0	0	2	11	6	24
Kiowa.....	24	6	4	1	2	0	0	0	0	2	11	0	1
Labette.....	57	68	14	9	8	4	0	0	13	39	52	14	9
Lane.....	10	10	2	0	0	0	0	0	2	1	7	1	6
Leavenworth.....	107	81	15	10	12	27	0	0	31	46	64	16	13
Linn.....	31	21	5	5	2	0	0	0	3	0	7	0	14
Linn.....	19	26	7	6	5	0	0	0	0	0	12	0	3
Logan.....	12	5	0	4	0	0	0	0	2	1	2	0	13



TABLE C-1.—CONTINUED. Summary of business handled—year ending June 30, 1956

COUNTIES	Estates of decedents		Guardianships		Trusts under supervision	Juvenile cases	Habeas corpus hearings	Orders in absence of district judge	Adoption proceedings	Insanity hearings	De-termination of descent	Miscellaneous	Foreign transcripts
	Opened during year	Closed during year	Opened during year	Closed during year									
Lyon.....	52	46	22	0	13	0	0	0	14	12	36	0	8
Marion.....	44	51	17	12	17	0	0	0	1	5	26	3	11
Marshall.....	64	70	22	9	8	7	0	2	7	26	29	8	8
McPherson.....	80	69	15	7	15	1	0	3	9	21	34	0	6
Meade.....	14	15	3	3	4	0	0	0	1	0	3	0	13
Miami.....	41	34	10	4	5	0	0	0	0	0	35	0	7
Mitchell.....	50	51	3	2	2	0	0	0	6	0	21	0	3
Montgomery.....	87	86	32	12	17	26	1	1	21	46	65	10	3
Morris.....	23	23	6	7	1	2	0	0	5	3	18	3	17
Morton.....	13	3	3	1	1	0	0	3	3	1	30	2	29
Nemaha.....	46	45	10	5	7	0	0	0	4	13	15	0	2
Neosho.....	41	65	18	12	7	5	0	0	13	27	53	9	0
Ness.....	19	18	8	4	2	2	0	0	2	1	5	0	14
Norton.....	29	27	5	7	2	0	0	0	4	12	8	4	14
Osage.....	29	30	4	5	8	3	0	0	5	7	19	0	10
Osborne.....	49	47	7	3	3	0	0	2	5	0	10	0	15
Ottawa.....	32	36	3	0	3	0	0	0	4	0	15	0	11
Palmer.....	41	26	16	1	5	7	2	0	9	240	16	0	21
Phillips.....	36	24	1	0	0	0	0	0	2	7	15	5	2
Potawatomie.....	44	34	10	5	5	0	0	3	9	13	16	2	16
Pratt.....	54	47	10	3	9	2	0	0	10	6	18	6	12
Rawlins.....	23	26	4	1	5	0	0	1	3	2	5	0	12
Reno.....	169	130	39	26	40	63	0	0	76	47	73	21	30
Republic.....	52	49	6	8	3	3	0	0	2	2	20	2	6
Rice.....	51	37	10	5	15	2	0	10	11	19	17	6	43
Riley.....	68	47	16	4	10	14	0	1	40	25	18	10	24
Rooks.....	26	38	7	2	7	0	0	7	13	12	7	1	12
Rush.....	21	23	3	3	3	0	0	0	0	6	7	0	15
Russell.....	42	50	7	11	4	4	0	17	9	3	15	3	33
Saline.....	95	99	17	10	24	24	0	0	33	0	26	0	22

TABLE C-1.—CONCLUDED. Summary of business handled—year ending June 30, 1956

COUNTIES	Estates of decedents		Guardianships		Trusts under supervision	Juvenile cases	Habeas corpus hearings	Orders in absence of district judge	Adoption proceedings	Insanity hearings	De-termination of descent	Miscellaneous	Foreign transcripts
	Opened during year	Closed during year	Opened during year	Closed during year									
Scott.	6	8	1	0	2	1	0	0	4	3	0	2	7
Sedgewick.	444	371	288	44	45	707	0	0	291	239	159	0	7
Seward.	17	13	9	2	7	2	0	15	9	18	16	1	12
Shawnee.	232	213	62	52	76	117	0	0	156	468	108	0	33
Sheridan.	14	15	5	0	1	0	0	0	2	0	10	0	25
Sherman.	19	9	5	3	1	1	0	0	4	5	7	1	10
Smith.	34	21	4	3	1	0	0	3	9	3	14	1	10
Stafford.	44	33	5	2	7	3	0	6	7	3	17	0	33
Stanton.	2	0	1	0	0	0	0	0	2	0	5	0	7
Stevens.	8	10	6	2	1	0	0	0	6	0	6	0	2
Sumner.	81	79	19	16	17	7	0	0	22	3	44	8	56
Thomas.	26	16	4	0	0	0	0	0	7	7	23	1	24
Trego.	19	24	5	2	2	0	0	0	3	1	5	0	16
Wabunsee.	22	24	5	2	1	0	0	0	5	4	14	2	16
Wallace.	6	5	1	0	0	2	0	2	4	0	0	2	9
Washington.	35	35	8	8	4	0	0	0	4	5	21	0	16
Wichita.	0	0	0	0	0	0	0	0	0	0	0	0	0
Wilson.	51	35	8	2	7	2	0	15	18	14	43	4	12
Woodson.	10	17	11	1	3	0	0	0	4	6	9	0	19
Wyandotte.	296	217	61	48	26	122	1	0	148	254	218	13	33
Totals.	4,947	4,374	1,378	642	831	1,368	8	163	1,553	2,197	2,468	295	1,656

## PROBATE COURTS

TABLE C-2.—ESTATES OF DECEDENTS—YEAR ENDING JUNE 30, 1956

COUNTIES	Number pending July 1, 1955	Number filed since July 1, 1955	Total number	Wills		Bonds			Estates closed		Estates pending July 1, 1956			
				With	Without	Personal	Surety	None	Total number closed	Closed within 15 months		Total number pending	Pending less than 1 year	
										Number	Percent		Number	Percent
Allen.....	67	34	101	40	61	46	20	35	30	15	50	71	34	49
Anderson.....	57	31	88	39	49	46	16	26	37	31	83	51	31	61
Atchison.....	69	44	113	75	38	11	52	50	39	24	62	74	44	59
Barber.....	35	35	70	32	38	33	8	29	26	24	96	44	35	80
Barton.....	125	87	212	125	87	80	25	107	56	48	56	126	87	69
Bourbon.....	70	40	110	54	56	31	38	41	46	28	61	64	40	63
Brown.....	52	57	109	52	57	20	47	42	39	32	82	70	57	81
Butler.....	125	73	198	108	90	63	34	101	70	43	61	128	73	57
Chase.....	21	19	40	15	25	12	16	12	7	0	0	33	19	58
Chautauqua.....	40	28	68	27	41	16	30	22	25	13	52	43	28	65
Cherokee.....	73	41	114	42	72	49	29	36	46	29	63	68	41	60
Cheyenne.....	12	13	25	15	10	7	9	9	7	3	50	19	13	68
Clark.....	14	13	27	16	11	12	6	9	7	1	14	20	13	65
Clay.....	72	60	132	80	52	63	19	50	52	44	85	80	60	75
Cloud.....	75	57	132	79	53	48	23	61	54	29	54	78	57	73
Coffey.....	36	31	67	40	27	17	26	24	26	15	58	41	31	76
Comanche.....	13	11	24	13	11	7	6	11	105	2	25	16	11	69
Cowley.....	176	115	291	155	136	129	40	122	105	69	66	186	115	62
Crawford.....	116	97	213	113	100	42	77	94	56	38	68	157	97	62
Decatur.....	20	28	48	17	31	34	2	12	18	10	56	30	28	93
Dickinson.....	85	76	161	111	50	40	42	70	86	80	93	75	76	101
Doniphan.....	45	34	79	31	48	46	34	30	34	23	68	45	34	76
Douglas.....	60	70	130	75	55	16	58	60	43	25	58	87	70	80
Edwards.....	31	22	53	30	23	17	8	28	27	18	67	26	22	85
Elk.....	43	20	63	34	29	32	6	25	21	10	48	42	20	48

TABLE C-2.—CONTINUED. Estates of decedents—year ending June 30, 1956

COUNTIES	Number pending July 1, 1955	Number filed since July 1, 1955	Total number	Wills		Bonds			Estates closed		Estates pending July 1, 1956			
				With	Without	Personal	Surety	None	Total number closed	Closed within 15 months		Total number pending	Pending less than 1 year	
										Number	Percent		Number	Percent
Ellis.....	104	65	169	105	64	66	13	90	36	56	105	65	62	
Ellsworth.....	50	45	95	50	45	48	10	37	34	85	85	45	82	
Finney.....	50	74	124	39	85	51	3	20	23	32	51	24	47	
Ford.....	52	36	88	33	55	17	25	47	24	26	65	37	57	
Franklin.....	73	53	126	69	57	47	29	50	53	74	73	53	73	
Geary.....	62	34	96	58	38	41	16	39	41	51	55	34	62	
Gove.....	20	35	55	20	35	12	6	17	13	62	22	15	68	
Graham.....	17	33	50	24	26	26	1	14	0	0	44	33	75	
Grant.....	17	39	56	3	53	0	14	5	3	100	16	12	75	
Gray.....	16	12	28	14	14	8	10	10	12	58	16	12	75	
Greeley.....	15	4	19	7	12	9	3	7	5	0	14	4	29	
Greenwood.....	53	47	100	37	63	59	19	22	42	39	93	47	81	
Hamilton.....	10	8	18	11	7	11	2	5	5	2	13	8	62	
Harper.....	49	36	85	55	30	34	12	49	38	27	47	36	77	
Harvey.....	33	54	87	87	50	34	43	60	48	34	89	54	61	
Haskell.....	9	9	18	9	9	8	5	5	4	2	14	9	64	
Hodgeman.....	21	7	28	12	16	14	3	11	10	3	18	7	39	
Jackson.....	44	27	71	33	38	28	10	24	34	32	37	27	73	
Jefferson.....	59	33	92	31	61	43	28	21	44	51	70	48	69	
Jewell.....	38	29	67	36	31	19	30	18	29	20	38	33	82	
Johnson.....	189	118	307	207	100	38	101	168	95	56	212	118	56	
Kearny.....	52	30	82	9	73	0	14	9	3	3	20	18	90	
Kingman.....	52	30	82	48	37	42	3	40	42	25	60	30	70	
Kiowa.....	18	24	42	22	20	15	5	22	6	3	36	24	67	
Labette.....	97	57	154	73	81	35	56	63	68	37	86	57	66	
Lane.....	16	10	26	10	16	15	4	7	10	8	16	10	63	
Leavenworth.....	150	107	257	140	126	31	90	145	81	57	70	185	58	
Linn.....	38	31	69	35	34	31	9	19	21	20	95	31	82	
Linn.....	32	19	51	18	33	29	6	16	26	19	73	25	76	
Logan.....	11	12	23	13	10	8	5	10	5	3	18	12	67	

TABLE C-2.—CONTINUED. Estates of decedents—year ending June 30, 1956

COUNTRIES	Number pending July 1, 1955	Number filed since July 1, 1955	Total number	Wills		Bonds			Estates closed		Estates pending July 1, 1956			
				With	Without	Personal	Surety	None	Total number closed	Closed within 15 months		Total number pending	Pending less than 1 year	
										Number	Percent		Number	Percent
Lyons	80	52	132	75	57	47	36	49	46	27	59	86	52	60
Madison	76	44	120	73	47	49	24	47	51	42	82	69	44	64
Marshall	97	64	161	84	77	68	29	68	70	52	74	91	64	70
McPherson	69	80	149	75	74	87	12	50	69	61	88	80	80	100
Meade	23	14	37	22	15	12	6	19	15	7	47	22	14	64
Miami	63	41	104	55	49	46	22	26	34	29	85	70	41	59
Mitchell	67	50	117	53	64	58	29	33	31	39	76	66	50	76
Montgomery	133	87	220	131	84	105	103	103	86	37	66	134	87	65
Morris	24	23	47	21	26	12	15	20	23	16	70	24	23	96
Morton	2	13	15	5	10	7	2	6	3	3	100	12	13	108
Nemaha	54	46	100	60	40	30	27	43	45	34	76	55	46	84
Neosho	75	41	116	59	57	23	42	51	65	50	77	51	41	80
Nesbit	19	16	35	15	20	17	14	14	28	11	93	20	19	95
Norton	50	29	88	52	36	22	30	36	27	9	33	61	29	48
Osage	44	29	73	37	36	23	23	27	24	24	80	43	29	67
Osborne	61	49	110	47	63	52	24	34	47	43	91	63	49	74
Ottawa	51	32	83	52	31	37	15	31	30	27	75	47	32	63
Pavane	40	41	90	52	38	21	21	20	26	17	79	34	41	64
Phillips	21	36	57	29	28	32	2	23	24	19	79	33	36	109
Pottawatomie	40	44	93	41	52	50	15	28	34	27	79	39	44	75
Prett	79	54	133	71	62	69	3	61	47	26	55	86	54	63
Rawlins	37	23	60	22	38	42	8	10	26	17	63	34	23	68
Reno	220	169	389	194	194	121	99	160	130	81	62	259	169	65
Republic	63	52	145	71	74	62	41	42	44	21	43	46	22	84
Rice	39	51	90	52	38	31	14	45	37	23	62	55	51	96

TABLE C-2.—CONCLUDED. Estates of decedents—year ending June 30, 1956

COUNTIES	Number pending July 1, 1955	Number filed since July 1, 1955	Total number	Wills		Bonds		Estates closed			Estates pending July 1, 1956			
				With	Without	Personal	Surety	None	Total number closed	Closed within 15 months		Total number pending	Pending less than 1 year	
										Number	Percent		Number	Percent
Riley.....	73	68	141	84	57	51	35	55	47	35	74	94	68	72
Rooks.....	49	26	75	38	37	36	9	29	38	27	75	37	26	70
Rush.....	39	21	60	32	28	24	10	27	23	18	78	37	21	57
Russell.....	70	42	112	60	52	58	13	41	50	17	34	62	42	68
Saline.....	149	95	244	133	111	70	76	98	99	59	60	145	95	66
Scott.....	18	6	24	11	13	0	14	10	8	4	50	16	6	38
Sedgwick.....	801	444	1,245	664	581	550	150	545	371	184	50	874	444	51
Seward.....	36	17	53	30	13	12	13	18	13	3	23	30	17	57
Shawnee.....	389	232	621	357	264	43	297	281	213	126	59	408	232	57
Sheridan.....	21	14	35	18	17	14	8	13	15	11	73	20	14	70
Sherman.....	19	19	38	21	17	3	11	24	9	3	37	29	19	67
Smith.....	42	34	76	42	34	43	3	30	21	5	24	55	34	62
Stafford.....	65	44	109	63	46	41	16	52	33	20	61	76	44	58
Stanton.....	1	2	3	1	2	2	4	0	0	0	0	3	2	67
Stevens.....	12	8	20	12	8	6	4	10	10	5	50	10	8	80
Summer.....	118	81	199	108	91	44	58	97	79	48	61	120	81	68
Thomas.....	31	26	57	23	34	16	22	19	16	13	81	41	26	63
Trego.....	26	19	45	23	22	23	4	18	24	16	67	21	19	90
Wabasha.....	36	22	58	36	22	28	7	23	24	11	46	34	22	65
Wallace.....	11	6	17	8	9	3	3	11	5	3	60	12	6	50
Washington.....	76	35	111	58	53	62	25	24	35	24	69	76	35	46
Wichita.....	0	0	0	0	0	0	0	0	0	0	0	0	0	0
Wilson.....	55	51	106	55	51	45	25	36	35	26	74	71	51	72
Woodson.....	19	10	29	17	12	8	10	11	17	13	76	12	10	83
Wyandotte.....	432	296	728	315	413	360	150	218	217	126	51	511	296	58
Totals.....	7,130	4,947	12,077	6,400	5,677	4,295	2,851	4,931	4,374	2,785	64	7,703	4,947	64

PROBATE COURTS  
TABLE C-3.—GUARDIANSHIPS AND TRUSTS—YEAR ENDING JUNE 30, 1956

COUNTIES	Guardianships										Trusts			
	Number pending July 1, 1955	Filed since July 1, 1955	Total number	Bonds			Inventory or account during year		Wards		Closed during year	Pending July 1, 1956	Number under supervision	Number of accounts during year
				Personal	Surety	None	Number	Percent of total	Minors	Insane or incompetent				
Allen.....	64	10	74	43	24	7	9	12	35	39	6	68	7	5
Anderson.....	26	5	31	19	12	0	6	19	13	18	2	29	3	2
Atchison.....	45	16	61	13	45	3	12	20	27	34	3	58	8	4
Barber.....	20	7	27	14	9	4	14	52	16	11	0	27	9	7
Barton.....	170	28	198	146	40	12	55	28	153	45	19	179	24	17
Bourbon.....	47	20	67	41	23	3	19	28	31	36	5	62	2	1
Brown.....	72	10	82	34	32	16	2	2	22	60	7	75	15	9
Butler.....	93	23	116	75	32	9	15	13	72	44	13	103	9	3
Chase.....	11	9	20	11	7	2	2	10	7	13	1	19	2	2
Chautauqua.....	27	8	35	27	7	1	12	34	16	19	5	30	3	1
Cherokee.....	131	17	148	66	43	39	11	7	53	95	6	142	5	4
Cheyenne.....	5	4	9	9	0	0	4	22	6	3	2	8	0	0
Clark.....	14	5	19	10	7	2	4	21	14	5	2	17	6	3
Clay.....	55	5	60	41	15	4	0	0	29	31	4	56	9	1
Cloud.....	70	12	82	47	23	12	12	15	31	51	10	72	12	10
Coffey.....	45	2	47	18	23	6	22	47	22	25	3	44	3	2
Comanche.....	9	11	20	8	3	0	4	36	5	6	0	11	0	0
Cowley.....	147	31	178	121	38	19	10	6	73	104	20	158	15	11
Crawford.....	90	33	123	56	63	4	4	3	61	62	9	114	9	4
Decatur.....	7	4	11	8	2	1	0	0	9	2	1	10	0	0
Dickinson.....	77	11	88	54	32	2	62	71	39	49	3	85	32	29
Doniphan.....	32	15	47	38	9	0	9	19	11	36	4	43	7	5
Douglas.....	21	14	35	8	23	4	7	20	20	15	7	28	22	14
Edwards.....	20	3	23	19	4	0	8	35	8	15	1	22	1	1
Elk.....	17	7	24	18	5	1	9	38	13	11	0	24	1	1

TABLE C-3.—CONTINUED. Guardianships and trusts—year ending June 30, 1956

COUNTRIES	Guardianships										Trusts			
	Number pending July 1, 1955	Filed since July 1, 1955	Total number	Bonds			Inventory or account during year		Wards		Closed during year	Pending July 1, 1956	Number under supervision	Number of accounts during year
				Personal	Surety	None	Number	Percent of total	Minors	Insane or incompetent				
Ellis.....	86	21	107	88	8	11	9	8	71	36	12	05	5	1
Ellsworth.....	43	6	49	36	5	8	29	59	38	11	4	4	6	6
Finney.....	56	0	56	52	4	0	10	18	37	19	2	54	3	0
Ford.....	55	12	67	21	32	14	20	30	32	5	5	62	6	5
Franklin.....	70	14	84	49	34	1	11	13	42	42	6	78	16	12
Geary.....	53	11	64	32	22	10	24	38	34	30	10	54	7	4
Gove.....	20	3	23	20	2	2	4	17	14	9	4	19	0	3
Graham.....	9	4	13	10	2	1	3	23	9	4	2	11	3	2
Grant.....	5	4	9	1	8	0	1	11	6	3	3	6	2	2
Gray.....	15	1	16	5	8	3	8	50	12	4	1	15	1	1
Greeley.....	1	2	3	2	1	0	0	0	2	1	0	3	0	0
Greenwood.....	31	11	42	20	22	0	18	43	19	23	0	38	4	3
Hamilton.....	16	5	21	7	4	10	13	62	11	10	4	18	3	3
Harper.....	42	4	46	30	7	9	13	65	24	22	3	41	14	13
Harvey.....	77	15	92	36	45	11	13	14	50	42	10	82	20	16
Haskell.....	8	2	10	6	3	1	3	30	5	5	0	10	0	0
Hodgeman.....	17	4	21	10	10	1	4	21	9	12	0	14	4	1
Jackson.....	34	13	47	28	13	6	15	32	13	34	8	39	3	1
Jefferson.....	55	18	73	39	29	5	30	41	23	50	4	69	1	0
Jewell.....	21	8	29	14	14	1	7	24	11	18	1	28	1	0
Johnson.....	162	25	187	57	96	34	13	70	133	54	18	169	42	17
Kearny.....	2	0	2	2	0	0	0	0	1	1	0	0	0	0
Kingman.....	52	10	62	54	5	3	5	8	29	33	5	57	6	3
Kiowa.....	14	4	18	13	5	0	6	33	8	10	1	17	2	1
Labette.....	70	14	84	26	42	16	9	11	32	52	9	75	8	5
Lane.....	3	2	5	3	2	0	3	60	3	2	0	5	0	0
Leavenworth.....	90	15	105	18	75	12	48	46	43	62	10	95	12	10
Lincoln.....	17	5	22	11	6	5	3	14	10	12	5	17	2	2
Linn.....	18	7	25	18	7	0	3	12	8	17	6	19	5	5
Logan.....	4	0	4	4	0	0	4	100	4	0	4	0	0	0



TABLE C-3.—CONTINUED. Guardianships and trusts—year ending June 30, 1956

COUNTIES	Guardianships										Trusts			
	Number pending July 1, 1955	Filed since July 1, 1955	Total number	Bonds			Inventory or account during year		Wards		Closed during year	Pending July 1, 1956	Number under supervision	Number of accounts during year
				Personal	Surety	None	Number	Percent of total	Minors	Insane or incompetent				
Lyon.....	65	22	87	54	24	9	26	30	32	55	0	87	13	10
Marion.....	107	14	121	97	21	3	45	37	70	51	12	109	17	12
Marshall.....	60	22	82	64	12	6	1	1	30	52	9	73	8	4
McPherson.....	60	6	66	60	6	0	1	2	40	26	7	59	15	13
Meade.....	12	3	15	11	2	2	4	27	9	6	3	12	4	3
Miami.....	45	10	55	29	18	8	9	16	23	32	4	51	5	3
Mitchell.....	20	3	23	16	7	0	16	70	11	12	2	21	2	3
Montgomery.....	144	32	176	18	121	37	34	19	95	81	12	164	17	13
Morris.....	50	6	56	24	11	21	3	5	20	36	7	49	1	0
Morton.....	3	3	6	0	6	0	1	17	4	2	1	5	1	0
Nemaha.....	56	10	66	42	22	2	29	44	29	37	5	61	7	3
Neosho.....	70	18	88	44	37	7	25	28	29	59	12	76	7	5
Ness.....	24	8	32	24	6	2	9	28	24	8	4	28	2	2
Norton.....	43	5	48	24	19	5	18	38	25	23	7	41	2	2
Osage.....	24	4	28	9	18	1	8	29	6	22	5	23	8	5
Osborne.....	34	7	41	23	12	6	19	46	23	18	3	38	3	2
Ottawa.....	32	3	35	27	8	0	0	0	0	23	0	35	5	4
Pawnee.....	49	16	65	38	20	7	4	6	39	26	1	64	3	1
Phillips.....	0	1	1	1	0	0	1	100	0	0	0	1	0	0
Pottawatomie.....	40	10	50	44	5	1	15	30	17	33	5	45	5	4
Pratt.....	47	10	57	54	1	2	6	16	44	13	3	54	9	5
Rawlins.....	30	4	34	27	7	0	9	18	23	11	1	33	5	2
Reno.....	183	39	222	126	65	31	28	13	142	80	26	196	40	5
Republic.....	54	6	60	33	22	5	9	16	27	33	8	52	5	5
Rice.....	40	10	50	30	11	9	16	32	31	19	5	45	15	11

TABLE C-3.—CONCLUDED. Guardianships and trusts—year ending June 30, 1956

COUNTIES	Guardianships										Trusts			
	Number pending July 1, 1955	Filed since July 1, 1955	Total number	Bonds		Inventory or account during year		Wards		Closed during year	Pending July 1, 1956	Number under supervision	Number of accounts during year	
				Personal	Surety	None	Number	Percent of total	Minors					Insane or incompetent
Riley.....	94	16	110	74	29	7	19	17	57	53	4	106	10	7
Rooks.....	22	7	29	21	7	1	15	52	18	1	2	97	7	6
Rush.....	27	3	30	24	6	0	7	23	23	7	3	27	3	2
Russell.....	68	14	82	61	16	5	3	4	63	19	11	71	7	4
Saline.....	83	17	100	47	49	4	45	45	59	41	10	90	24	18
Scott.....	0	1	1	0	1	0	0	0	1	0	0	1	2	2
Sedgwick.....	880	288	1,168	643	169	366	71	6	736	432	44	1,124	45	15
Seward.....	46	9	55	32	17	6	13	27	44	11	2	53	7	6
Shawnee.....	469	62	531	128	362	41	86	16	190	34	52	478	76	51
Sheridan.....	5	5	10	5	3	2	1	10	5	5	0	10	1	1
Sherman.....	33	5	38	16	12	10	0	0	23	15	3	35	1	0
Smith.....	26	4	30	26	4	0	4	13	18	12	3	27	1	0
Stafford.....	39	5	44	33	9	2	20	43	19	23	2	42	7	6
Stanton.....	1	1	2	0	1	1	1	50	2	0	2	2	1	0
Stevens.....	2	6	8	4	4	0	1	13	6	2	2	6	1	1
Sumner.....	115	19	134	66	52	16	44	33	75	59	16	118	17	8
Thomas.....	20	4	24	7	3	14	1	4	17	16	0	24	0	0
Trego.....	26	5	31	22	6	3	5	16	14	14	2	20	2	1
Wabaussee.....	17	5	22	17	1	4	4	18	12	10	2	20	1	1
Wallace.....	7	1	8	4	3	1	4	50	6	2	0	8	0	0
Washington.....	32	8	40	31	9	0	8	20	19	21	8	32	4	4
Wichita.....	0	0	0	0	0	0	0	0	0	0	0	0	0	0
Wilson.....	67	8	75	44	20	11	4	5	38	27	1	73	7	6
Woodson.....	18	11	29	11	9	9	10	34	9	20	2	28	3	2
Wyandotte.....	367	61	428	260	163	5	133	31	214	214	48	380	26	8
Totals.....	6,217	1,378	7,595	4,151	2,448	996	1,466	19	3,987	3,608	642	6,953	881	514

TABLE D-1.—(COMBINED WITH B-2).—COUNTY AND CITY COURTS  
DISPOSITION OF CASES—YEAR ENDING JUNE 30, 1956

COUNTY COURTS	Number of cases	Civil cases			Criminal cases			
		Number	Dis-missed	Trials	Number	Dis-missed	Pleas of guilty	Trials
Allen.....	357	62	18	16	295	28	229	17
Anderson.....	207	36	7	2	171	5	128	3
Barber.....	226	39	6	2	187	37	104	4
Barton.....	85	77	23	17	8	8	0	0
Brown.....	78	20	8	0	58	17	16	3
Butler.....	1,155	207	51	98	948	212	329	68
Cheyenne.....	79	5	4	1	74	2	64	1
Clark.....	53	8	4	0	45	7	24	0
Clay.....	80	8	3	0	72	5	59	1
Cloud.....	166	35	9	10	131	8	85	3
Coffey.....	352	24	9	1	328	25	243	3
Comanche.....	53	5	0	0	48	1	37	0
Decatur.....	86	0	0	0	86	17	66	0
Dickinson.....	96	42	9	6	54	7	23	4
Doniphan.....	227	19	1	10	208	10	160	5
Douglas.....	1,172	187	64	5	985	79	755	12
Edwards.....	128	7	3	0	121	45	43	1
Ellis.....	490	69	24	5	421	9	290	7
Ellsworth.....	575	29	4	0	546	12	529	3
Finney.....	662	74	33	29	588	34	450	3
Ford.....	369	137	26	14	232	37	110	13
Franklin.....	604	31	8	3	573	76	358	9
Geary.....	266	84	17	7	182	29	86	5
Gove.....	51	8	8	0	43	9	29	0
Graham.....	140	33	25	0	107	32	49	1
Greenwood.....	314	77	12	2	237	19	161	5
Harper.....	282	63	46	3	219	38	135	1
Harvey.....	988	67	13	3	921	29	749	41
Hodgeman.....	55	11	6	1	44	1	32	2
Jackson.....	43	22	11	1	21	1	4	1
Jewell.....	296	10	1	6	286	12	199	0
Kearny.....	173	4	1	1	169	8	145	0
Kingman.....	406	23	7	8	383	17	352	1
Lincoln.....	136	5	3	0	131	37	77	0
Marion.....	306	62	36	2	244	49	146	6
Marshall.....	244	40	23	5	204	88	96	2
Miami.....	454	58	8	2	396	12	314	1
Mitchell.....	316	21	8	1	295	63	150	4
Morris.....	251	28	6	2	223	17	168	0
Ness.....	129	13	2	3	116	12	97	3
Norton.....	118	23	7	0	95	4	80	0
Osage.....	343	32	16	0	311	37	235	5
Osborne.....	175	23	9	5	152	23	121	0
Pawnee.....	288	59	16	4	229	18	181	3
Phillips.....	189	17	12	0	172	3	140	0
Pottawatomie.....	209	33	7	18	176	51	79	19
Pratt.....	423	49	12	5	374	15	309	2
Rawlins.....	92	12	6	0	80	22	50	1
Republic.....	136	20	12	0	116	5	79	1
Rice.....	303	42	14	1	261	56	128	3
Riley.....	41	40	15	3	1	1	0	0
Rooks.....	297	51	15	2	246	26	100	70
Rush.....	280	29	18	0	251	127	66	3
Russell.....	43	41	17	3	2	0	1	1
Scott.....	53	17	12	2	36	13	14	0
Seward.....	616	49	13	1	567	80	394	13
Sheridan.....	143	16	3	0	127	4	106	2
Sherman.....	78	12	6	0	66	29	19	2
Smith.....	104	1	1	0	103	3	88	1
Stafford.....	341	41	27	4	300	6	248	4

TABLE D-1 (Combined with B-2).—CONCLUDED. Disposition of cases—  
year ending June 30, 1956

COUNTY COURTS	Number of cases	Civil cases			Criminal cases			
		Number	Dis- missed	Trials	Number	Dis- missed	Pleas of guilty	Trials
Stevens.....	250	13	3	3	237	0	235	0
Thomas.....	355	8	2	1	347	5	312	0
Trego.....	184	12	5	1	172	37	106	3
Wabaunsee.....	201	11	5	0	190	40	131	0
Wallace.....	45	5	2	0	40	1	33	1
Washington.....	144	10	5	0	134	32	75	11
Woodson.....	177	25	1	3	152	5	132	1
Totals.....	17,778	2,441	808	322	15,337	1,797	10,503	379
CITY COURTS								
Arkansas City.....	607	190	4	10	417	29	330	10
Atochison.....	959	574	82	26	385	14	280	20
Chanute.....	330	44	16	1	286	10	226	9
Coffeyville.....	1,434	971	106	41	463	18	323	29
Hutchinson.....	1,816	496	139	36	1,320	196	854	17
Independence.....	682	126	39	11	556	65	328	23
Johnson County (Magistrate).....	5,297	1,247	464	68	4,050	454	2,995	93
Kansas City.....	5,700	4,565	338	536	1,135	411	202	48
Leavenworth.....	582	207	46	0	375	39	244	37
Pittsburg.....	567	135	31	17	432	40	246	33
Salina.....	1,167	343	109	56	824	295	290	53
Topeka.....	5,146	1,866	581	78	3,280	405	2,082	230
Wichita.....	12,216	7,799	1,875	583	4,417	849	2,359	207
Winfield.....	838	225	71	20	613	47	475	12
Totals.....	37,341	18,788	3,901	1,483	18,553	2,872	11,239	821

### **Please Help Us Keep Our Mailing List Up to Date**

The JUDICIAL COUNCIL BULLETIN is published quarterly and mailed without charge to lawyers, courts, public officials, newspapers and libraries, who are or may be interested in our work. We are glad to add to our mailing list the name of any person who is interested in receiving the BULLETIN regularly. We will also send current numbers to persons making requests for them, and will furnish back numbers so far as available.

In order to save unnecessary printing expenses, we are constantly revising our mailing list, and are attempting to eliminate the names of persons who have died or moved out of the state or who have changed their addresses and are receiving the BULLETIN at the new address.

Please advise promptly if you have changed your address, giving the old address as well as the new. If you do not receive any current BULLETIN and wish to remain on the mailing list, please notify us to that effect. If you are receiving a BULLETIN addressed to some person who has died or moved away, please let us know and we will remove the name from the list.

Address all inquiries to THE JUDICIAL COUNCIL, STATE HOUSE, TOPEKA, KAN.

## MEMBERS OF THE JUDICIAL COUNCIL

---

ROBERT T. PRICE, <i>Chairman</i> . (1954-)	Topeka
Justice of the Supreme Court.	
WILLIAM M. MILLS, JR., <i>Secretary</i> . (1953-)	Topeka
JAMES E. TAYLOR. (1941-)	Sharon Springs
ROBERT H. COBEAN. (1947-)	Wellington
A. K. STAVELY. (1951-)	Lyndon
Judge Thirty-fifth Judicial District.	
J. WILLARD HAYNES. (1951-)	Kansas City
JOHN H. MURRAY. (1953-)	Leavenworth
Chairman House Judiciary Committee.	
JOSEPH J. DAWES. (1953-)	Leavenworth
Judge First Judicial District.	
WILFORD RIEGLE. (1953-)	Emporia
Chairman Senate Judiciary Committee.	

### FORMER MEMBERS OF THE JUDICIAL COUNCIL

W. W. HARVEY, <i>Chairman</i> . (1927-1941)	Ashland
Justice of the Supreme Court.	
WALTER G. THIELE, <i>Chairman</i> . (1941-1953)	Lawrence
Justice of the Supreme Court.	
J. C. RUPPENTHAL, <i>Secretary</i> . (1927-1941)	Russell
RANDAL C. HARVEY, <i>Secretary</i> . (1941-1953)	Topeka
EDWARD L. FISCHER. (1927-1943)	Kansas City
ROBERT C. FOULSTON. (1927-1943)	Wichita
CHARLES L. HUNT. (1927-1941)	Concordia
CHESTER STEVENS. (1927-1941)	Independence
JOHN W. DAVIS. (1927-1933)	Greensburg
C. W. BURCH. (1927-1931)	Salina
ARTHUR C. SCATES. (1927-1929)	Dodge City
WALTER PLEASANT. (1929-1931)	Ottawa
ROSCOE H. WILSON. (1931-1933)	Jetmore
GEORGE AUSTIN BROWN. (1931-1933)	Wichita
RAY H. BEALS. (1933-1938)	St. John
HAL E. HARLAN. (1933-1935)	Manhattan
SCHUYLER C. BLOSS. (1933-1935)	Winfield
E. H. REES. (1935-1937)	Emporia
O. P. MAY. (1935-1937)	Atchison
KIRKE W. DALE. (1937-1941)	Arkansas City
HARRY W. FISHER. (1937-1939)	Fort Scott
GEORGE TEMPLAR. (1939-1941, 1943-1947, 1953)	Arkansas City
EDGAR C. BENNETT. (1938-1951)	Marysville
SAMUEL E. BARTLETT. (1941-1951)	Wichita
PAUL R. WUNSCH. (1941-1943)	Kingman
WALTER F. JONES. (1941-1945)	Hutchinson
GROVER PIERPONT. (1943-1944)	Wichita
I. M. PLATT. (1943-1945)	Junction City
C. A. SPENCER. (1944-1951)	Oakley
CHARLES VANCE. (1945-1947)	Liberal
RICHARD L. BECKER. (1949-1951)	Coffeyville
W. D. VANCE. (1951-1952)	Belleville
JOHN A. ETLING. (1945-1953)	Kinsley
DALE M. BRYANT. (1947-1949, 1951-1953)	Wichita
FRANKLIN B. HETTINGER. (1952-1953)	Hutchinson

KANSAS JUDICIAL COUNCIL  
STATE HOUSE  
TOPEKA, KANSAS  
RETURN POSTAGE GUARANTEED

Sec. 34.66, P. L. & R.  
U. S. POSTAGE  
**PAID**  
Topeka, Kansas  
Permit No. 421

---

PRINTED BY  
FERD VOILAND, JR., STATE PRINTER  
TOPEKA, KANSAS

1956



26-5917